

TriTec

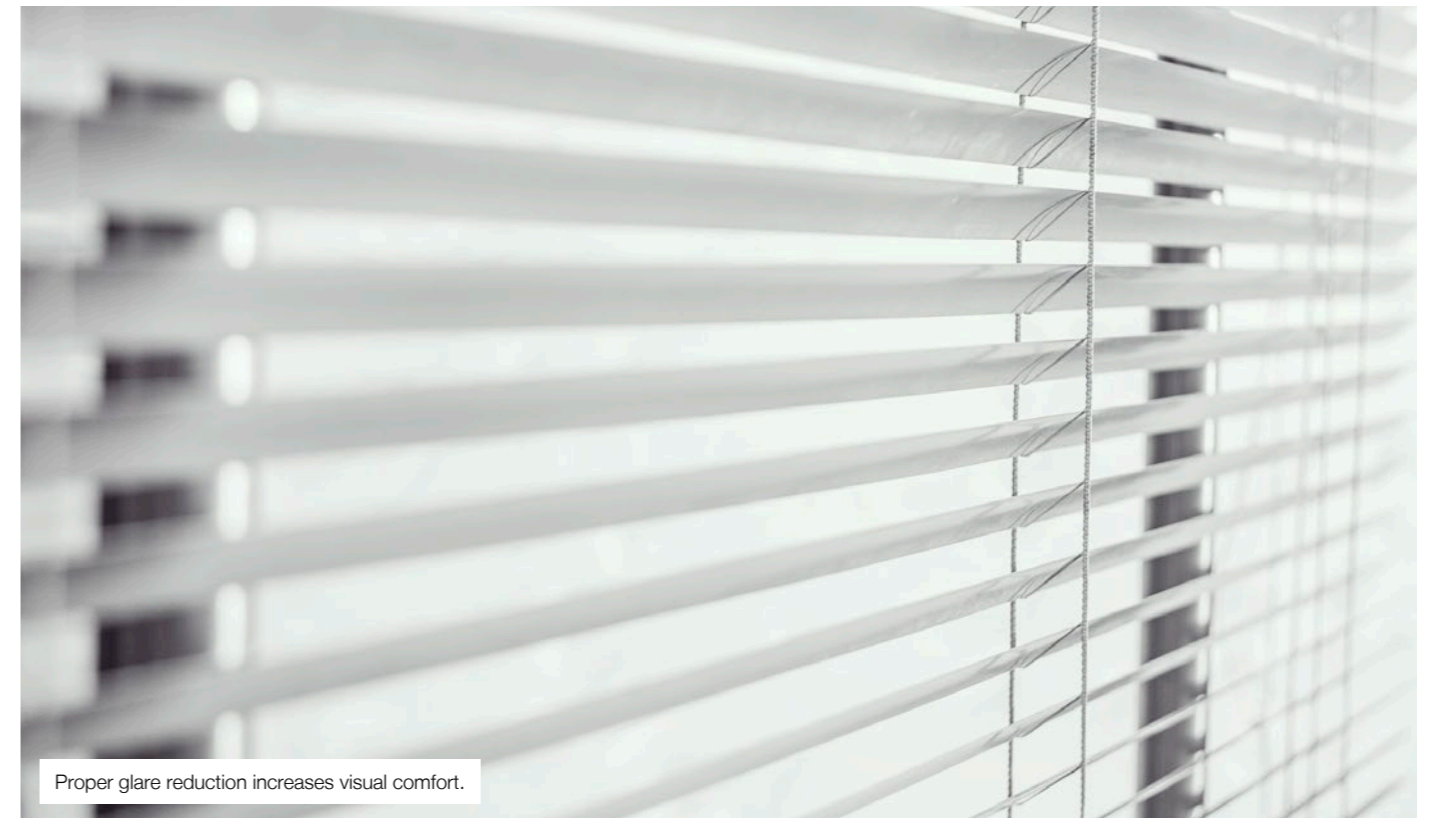
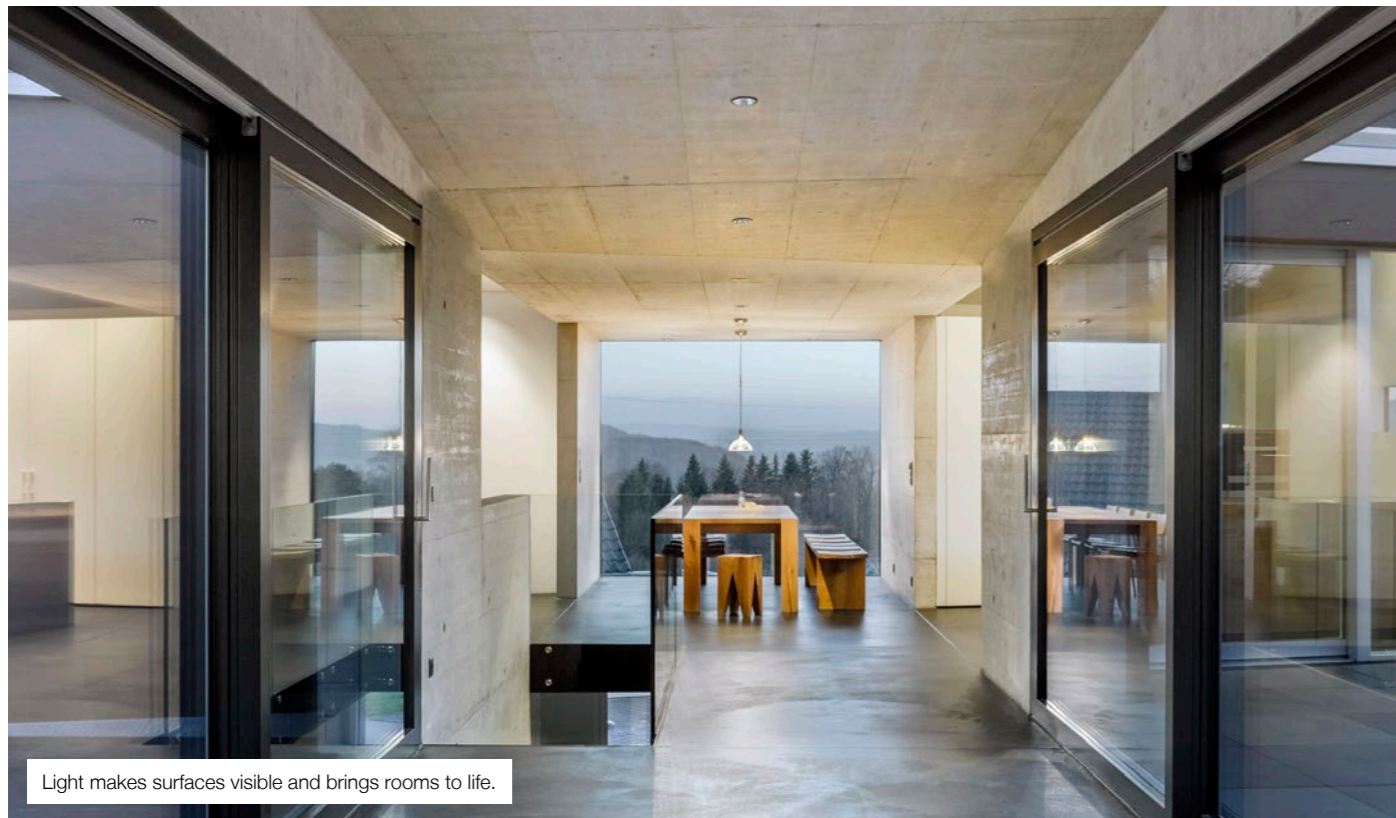
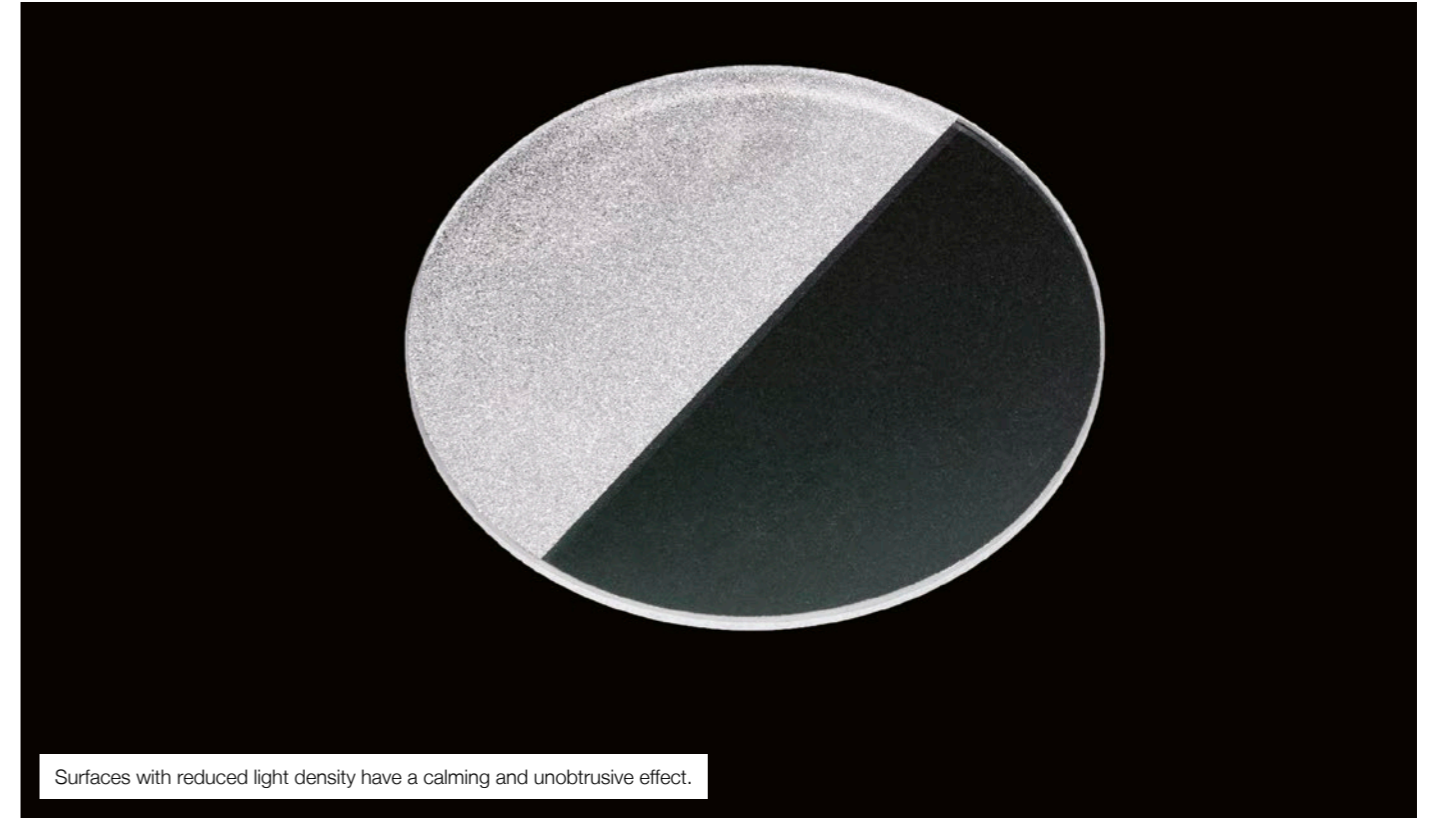
Glare-free light

TriTec THREE TECHNOLOGIES – ONE SHAPE – OPTIMUM REDUCTION IN GLARE

Light is only visible to us when it hits our retina. This is why we only see light that comes directly from a shining light source or an illuminated object. This light is scattered and enters our eye. The range of TriTec recessed spotlights thoroughly embraces this law of physics, directing the right amount of light to the right place while the fittings themselves blend discreetly into the background. In order to prevent the luminaire body from glowing at the same time and to ensure the perfect Darklight effect, all TriTec spotlights are fitted with a specially coated anti-dazzle cone. The three versions – downlight, spotlights and lens wallwasher – boast a uniform design, allowing for flexible lighting concepts in a consistent style. Using the latest LED technology and precise light guidance, the TriTec luminaires help draw attention to the specific objects and surfaces they illuminate.

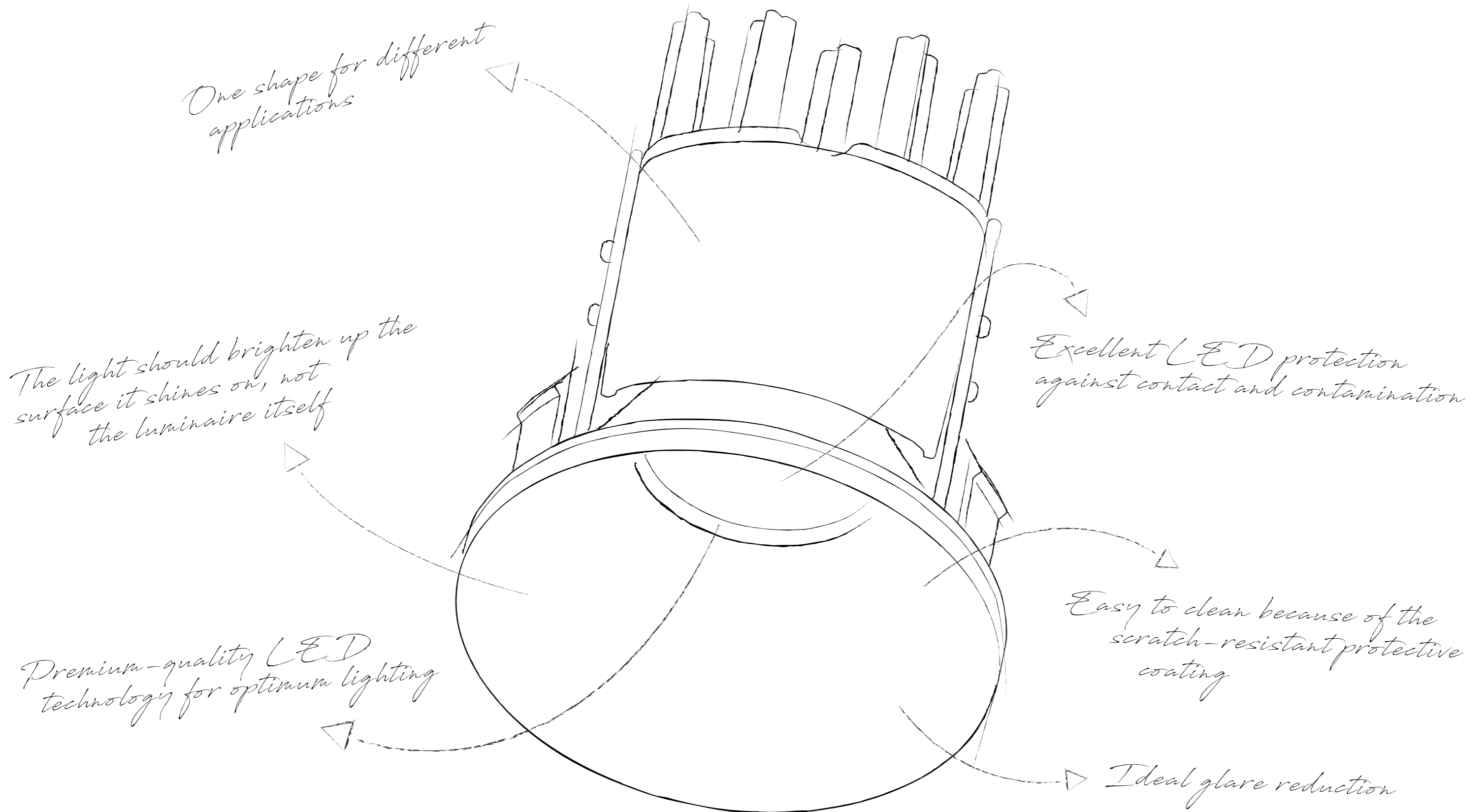
INSPIRATION

JUST AS AN ARTIST USES A BRUSH AND PAINT TO TURN A BLANK CANVAS INTO A WORK OF ART – LIGHT BRINGS A ROOM TO LIFE LIKE NEVER BEFORE



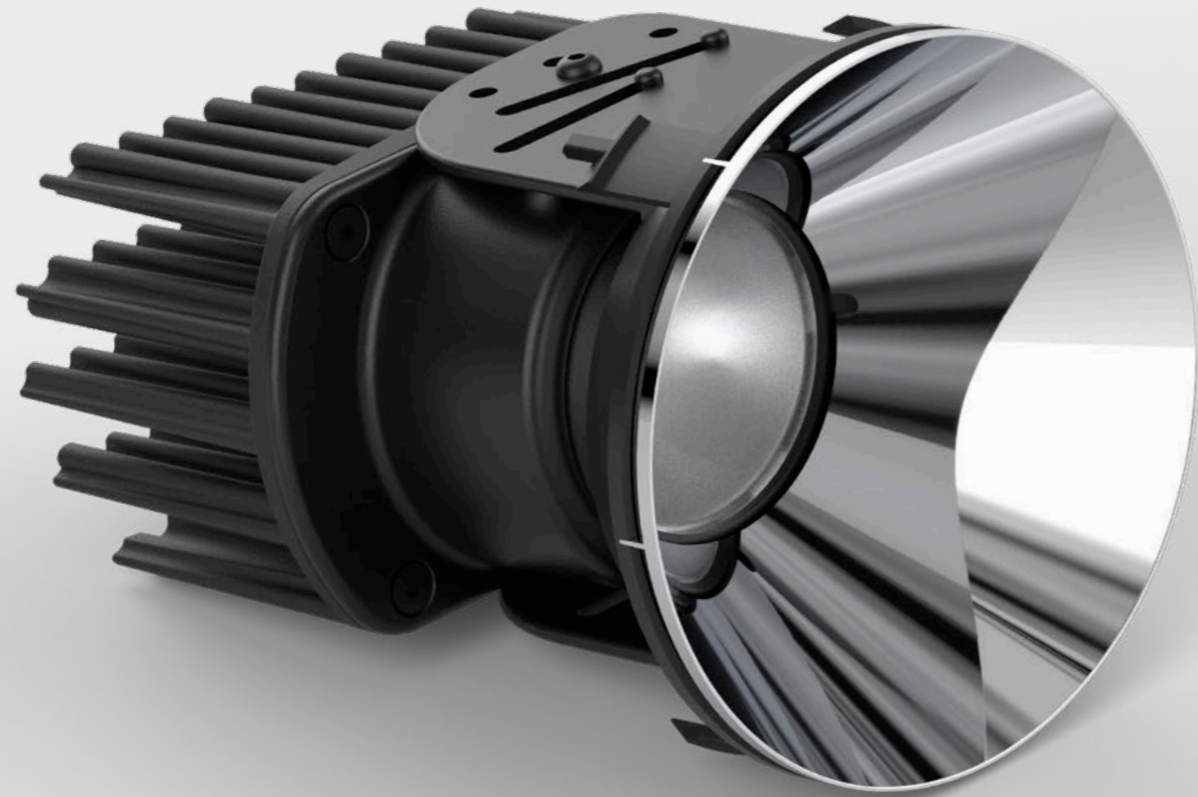
CONCEPT

AN AVERAGE PERFORMANCE IS NOT GOOD ENOUGH FOR US –
WE WANT TO OFFER THE BEST POSSIBLE SOLUTION AT ALL TIMES



PRESENTATION

TRITEC IS WINNING OVER CUSTOMERS WITH ITS INNOVATIVE TECHNOLOGY AND PREMIUM-QUALITY FINISH



APPLICATION

GREAT ARCHITECTURE DESERVES GREAT LIGHTING – OUR PRODUCTS OFFER THE RIGHT TOOLS TO ACHIEVE PRECISELY THAT

RAIFFEISENBANK JUNGFRAU

Location of project: Interlaken, Switzerland

Lighting concept: atelier 10punkt3 ag, Bern / Neuco AG, Zurich

Photography: Architekturfotografie Gempeler, Bern



RESTAURANT GURTNER

Location of project: Wabern, Switzerland

Lighting concept: atelier 10punkt3 ag, Bern/Neuco AG, Zurich

Photography: Architektur fotografie Gempeler, Bern

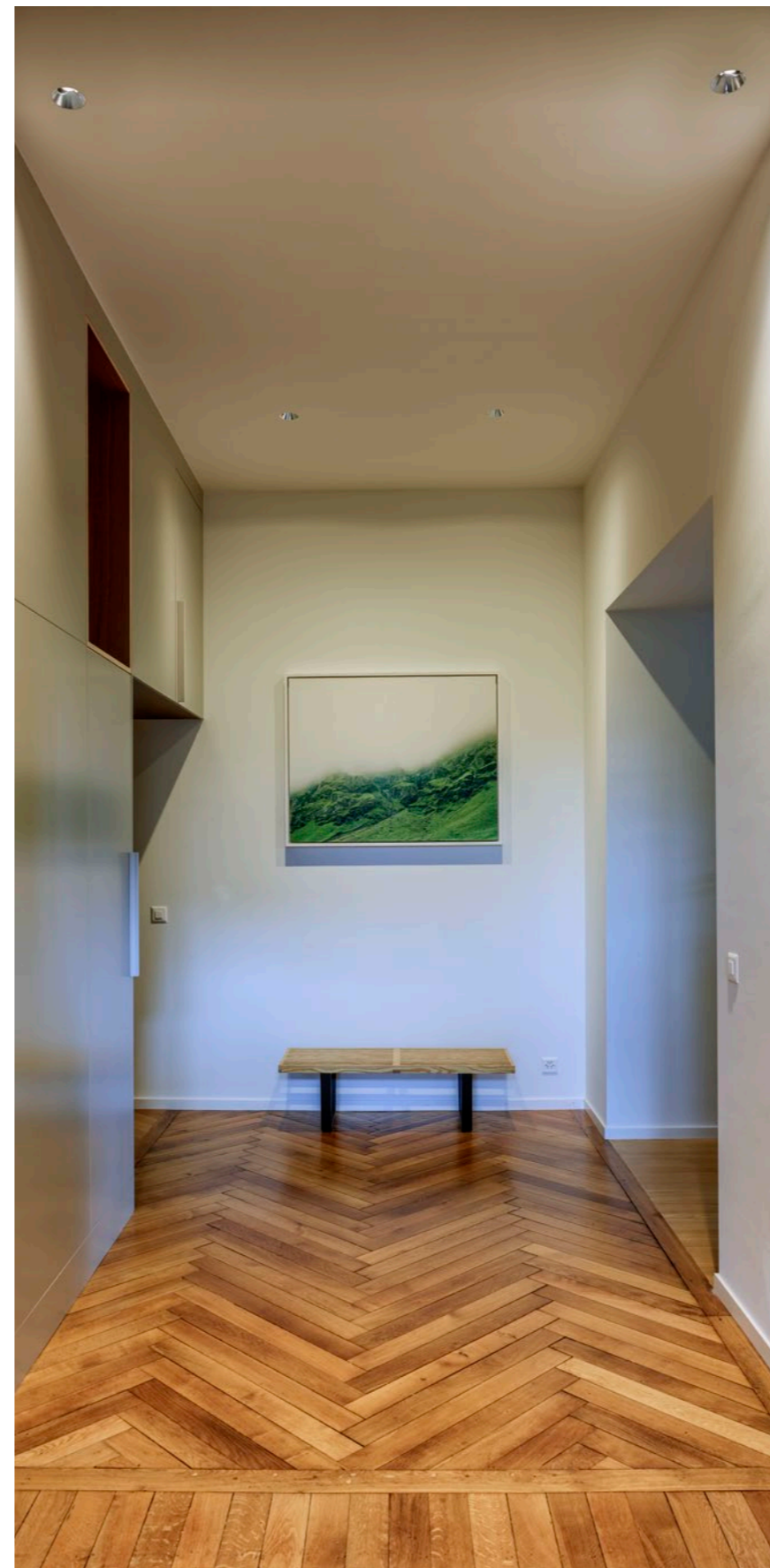


ZADIK ARCHITEKTEN

Location of project: Rafz, Switzerland
Lighting concept: zadik architekten, Rafz/Neuco AG, Zurich
Photography: Architekturfotografie Gempeler, Bern



PRIVATE APARTMENT
Lighting concept: Neuco SA, Romanel
Photography: Architekturfotografie Gempeler, Bern



FEATURES & BENEFITS

THREE TECHNOLOGIES – ONE SHAPE

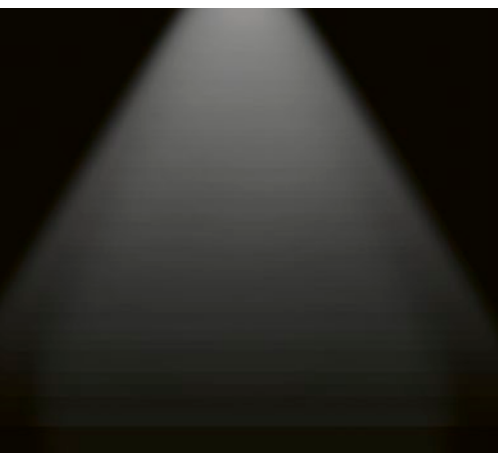
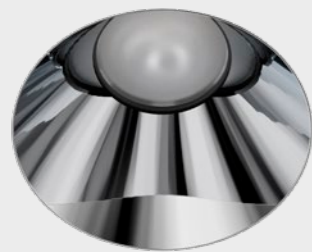
The name TriTec refers to the three technologies: Downlight, spotlight and lens wallwasher. These three technologies can be used to create customised lighting concepts while keeping the overall look of the ceiling consistent.



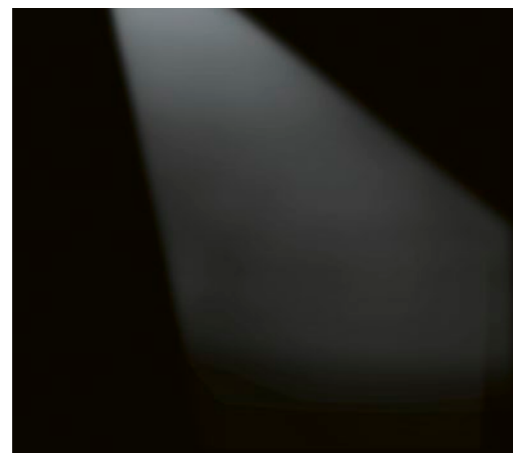
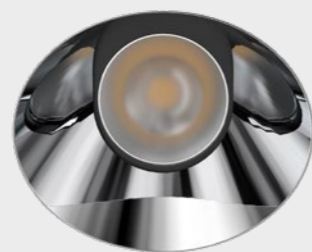
GLARE-FREE LIGHT WITHOUT THE DISRUPTIVE GLOW OF THE LUMINAIRE BODY

In TriTec luminaires, the actual light source is set back in the ceiling by an anti-dazzle cone, which significantly increases the dimming area. A special layer ensures that the anti-dazzle cone does not scatter light itself and that the light only shines on the required surfaces in the room. This creates 100% Darklight effect. The cone does not affect the light emitted, so customer-specific colour variations can also be achieved without affecting the colour temperature.

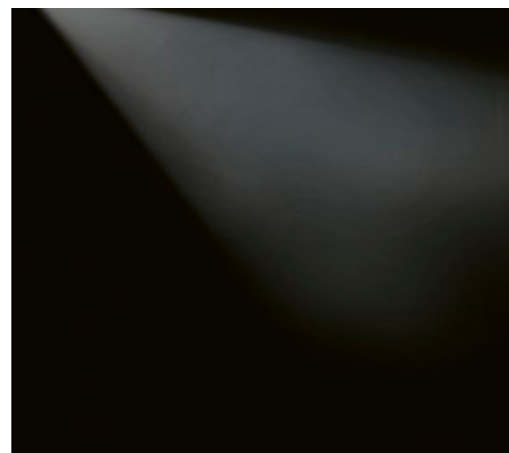
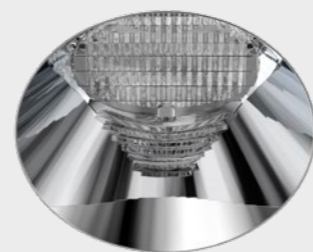
Downlight



Spotlight



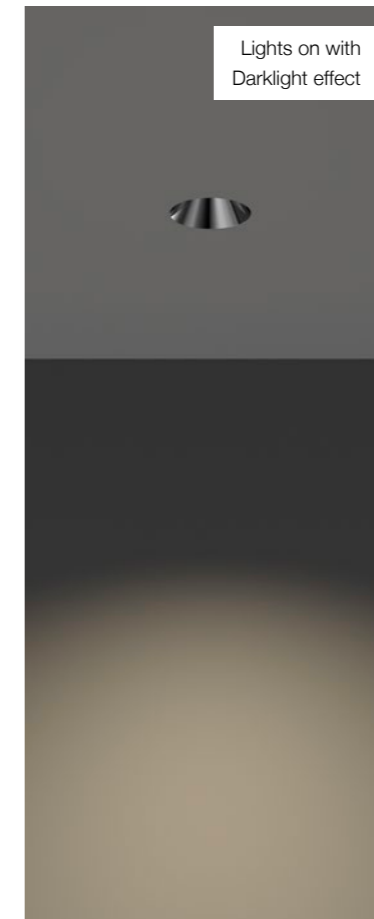
Lens wallwasher



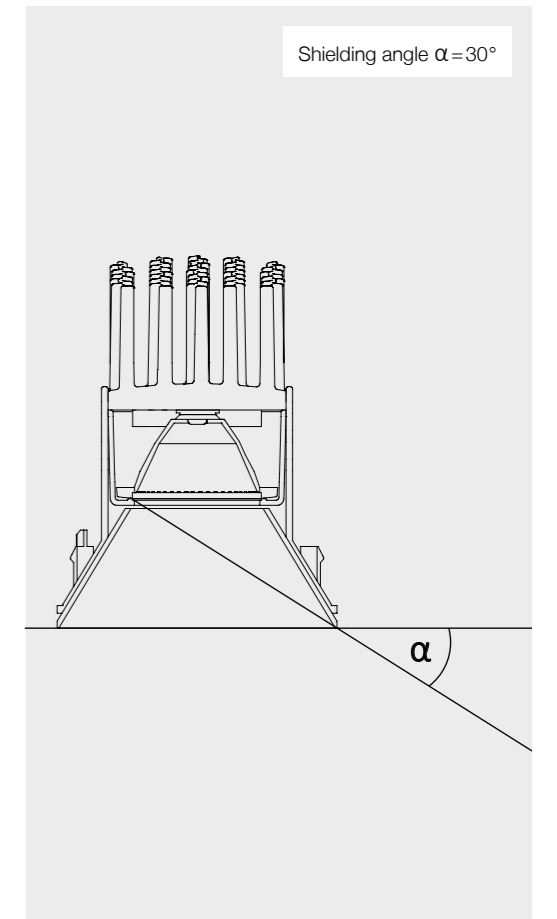
Lights off



Lights on with Darklight effect



Shielding angle $\alpha = 30^\circ$



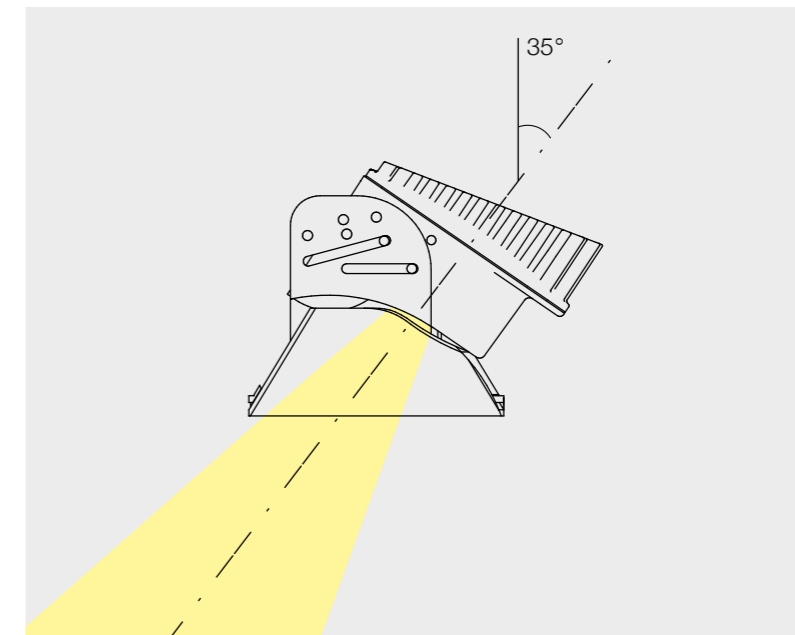
TECHNOLOGY

An impressive design means TriTec offers the perfect lighting solution to satisfy the most stringent requirements. The specifically developed die-cast aluminium heat sink ensures optimum LED cooling while keeping the installation depth to a minimum. The LED light is efficiently guided onto the required surface by a primary reflector. A homogenising diffuser lens protects the LED from contact and contamination and allows the luminaire to be cleaned with ease. To make them easier to install, all TriTec spotlights can be connected to the relevant operating devices with a plug connector.



SPOTLIGHTS WITH SLIDING BLOCK GUIDE

The spotlights have a pivot range of 0°–35°. The sliding block guide allows the light source to be in the ideal position for the anti-dazzle cone throughout the pivot range. The anti-dazzle cone is not directly illuminated even when the light source is fully tilted to 35°. This means the light output is fully used regardless of the position when pivoted. At the same time, the protective cover means you cannot see into the ceiling cavity.



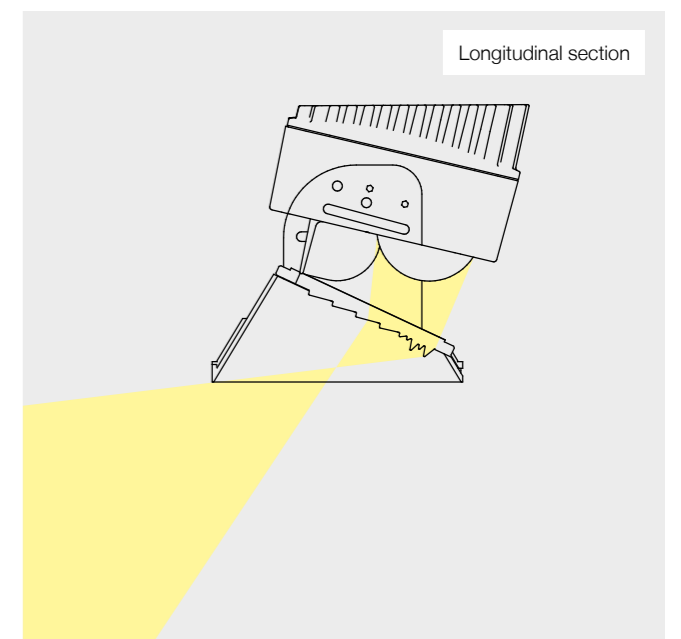
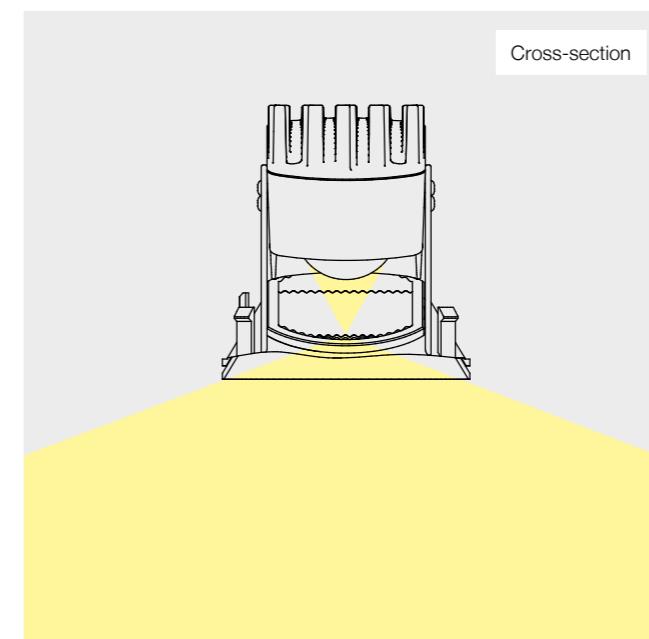


LENS TECHNOLOGY FOR SPECIFIC LIGHT ACCENTS

The 16° FWHN beam angle allows objects to be showcased in a more targeted way. A sharp beam of light is projected through a convex glass lens without scattering any light, allowing you to emphasise items such as sculptures or pictures even more boldly.

PERFECTLY UNIFORM WALL ILLUMINATION

The lens wallwasher focuses the light through a convex glass lens and a diverging lens then casts the light evenly onto the wall. With spacing based on $\frac{1}{3}$ of the height of the room – both in relation to the illuminated wall and between the luminaires – the illumination of the wall surface is completely uniform.



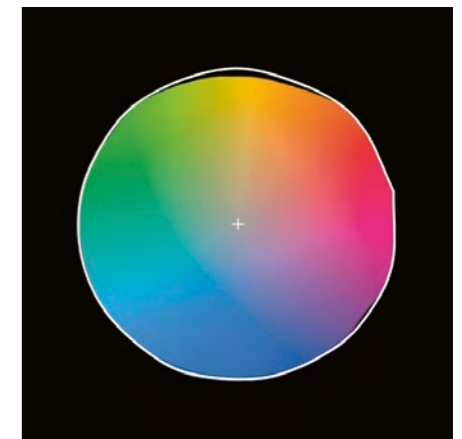
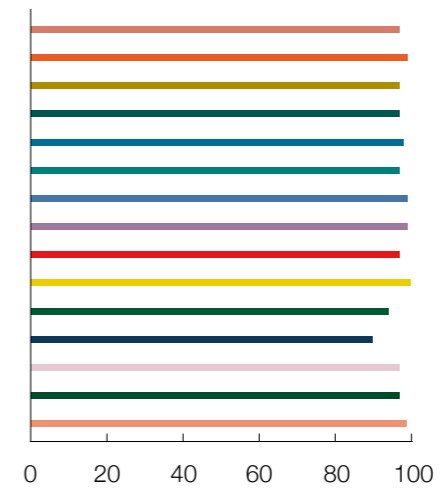
BEST LIGHT TO SATISFY THE MOST DISCERNING DEMANDS

TriTec is in a league of its own when it comes to colour consistency. TriTec boasts a first-rate colour consistency with a range extending to the initial two-step MacAdam. This means that multiple beams of light can be projected onto a white wall without any differences in colour temperature. This guarantees that the colour of the illuminated surface is rendered consistently. The high colour rendering of up to $\text{CRI} \geq 95$ gives colours a natural, full appearance. In addition to this, the red tones that are difficult to produce with traditional LEDs are superbly rendered by TriTec ($\text{R9} \geq 97$ at 2700K, $\text{R9} \geq 99$ at 3000K and $\text{R9} \geq 99$ at 4000K)



2700 K COLOUR RENDERING

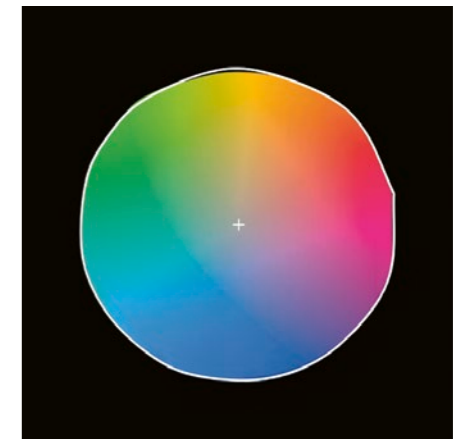
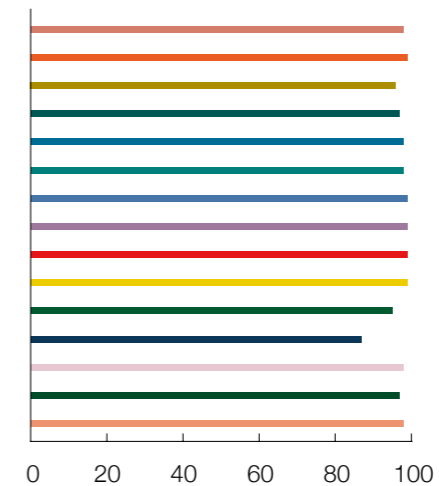
CRI	95
R1	97
R2	99
R3	97
R4	97
R5	98
R6	97
R7	99
R8	99
R9	97
R10	100
R11	94
R12	90
R13	97
R14	97
R15	99
Ra	98



TM-30 2700K CRI 95

3000 K COLOUR RENDERING

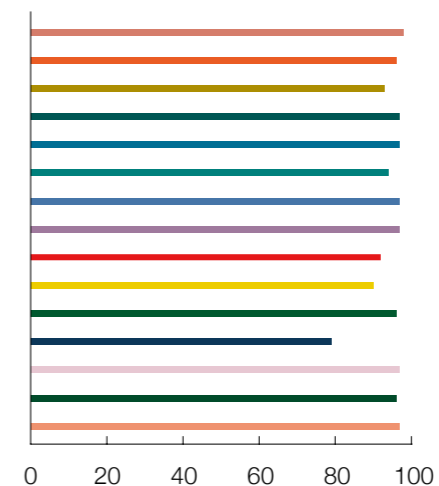
CRI	95
R1	98
R2	99
R3	96
R4	97
R5	98
R6	98
R7	99
R8	99
R9	99
R10	99
R11	95
R12	87
R13	98
R14	97
R15	98
Ra	98



TM-30 3000K CRI 95

4000 K COLOUR RENDERING

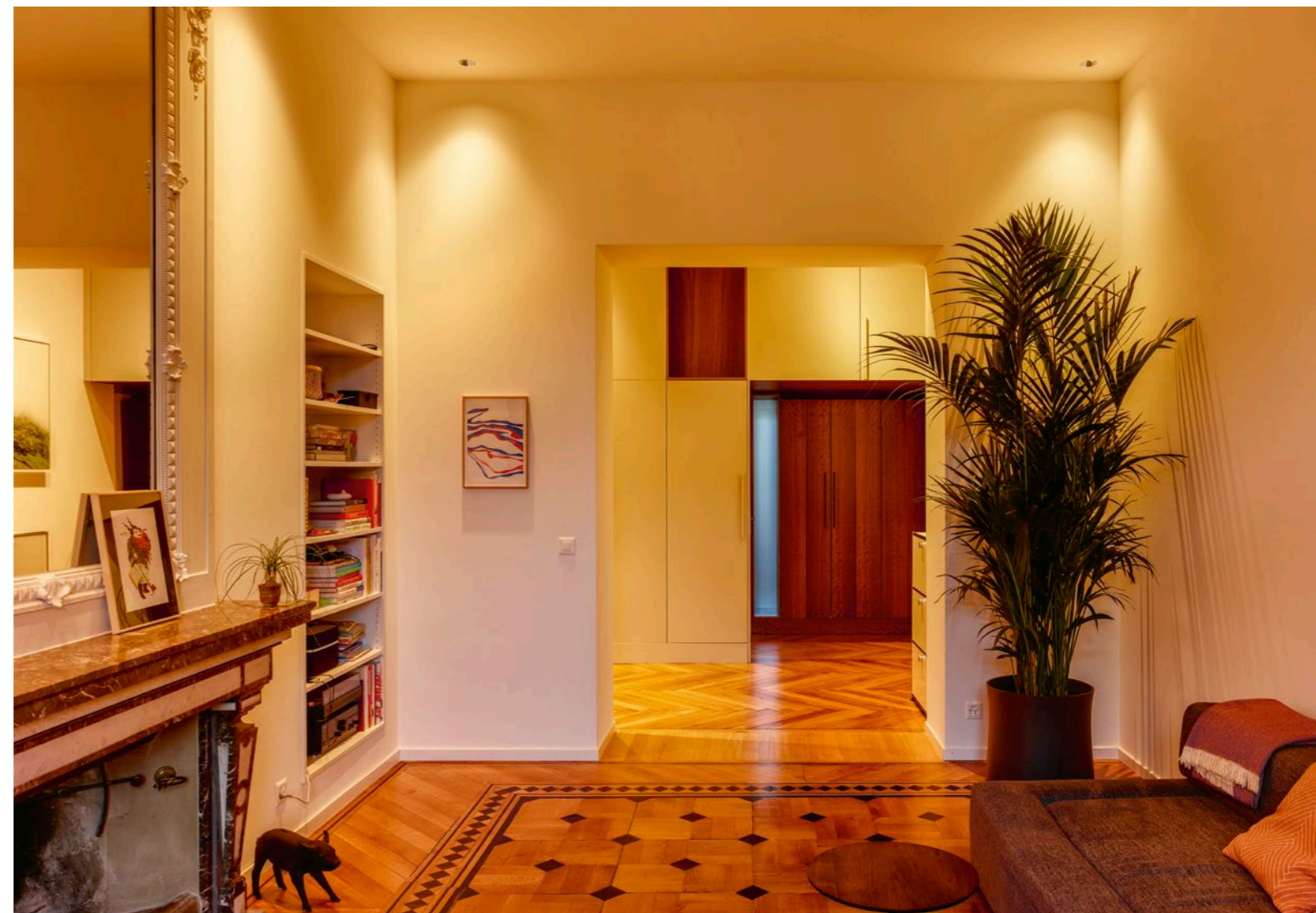
CRI	95
R1	98
R2	96
R3	93
R4	97
R5	97
R6	94
R7	97
R8	97
R9	92
R10	90
R11	96
R12	79
R13	97
R14	96
R15	97
Ra	96



TM-30 4000K CRI 95

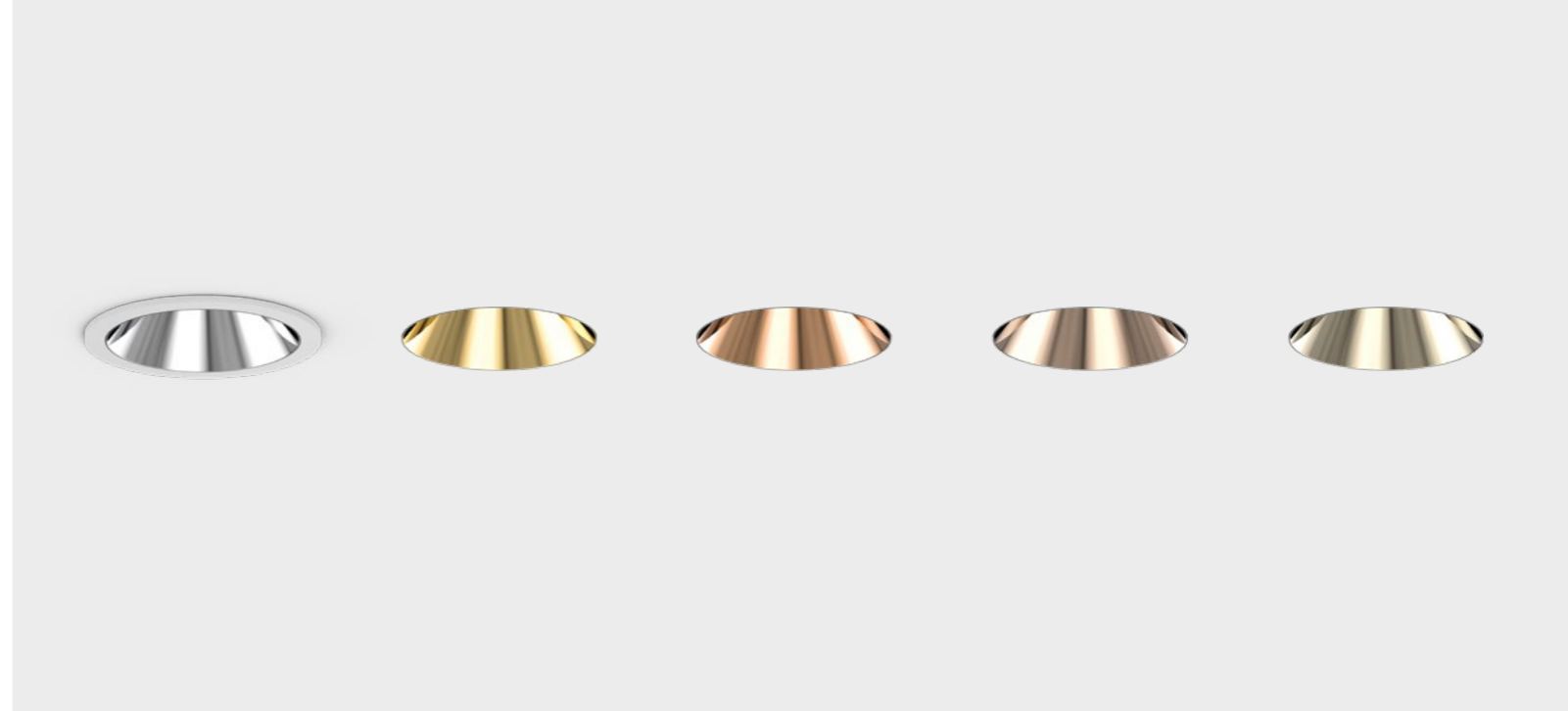
COZI – SHIFTING THE COLOUR TEMPERATURE ACROSS THE DIMMING RANGE TO CREATE A COSY ATMOSPHERE

Having the right colour temperature is essential for a cosy atmosphere in any room. TriTec COZI follows the example of a thermal radiator, shifting the colour temperature across the entire dimming range, from 2700K at full light output to 1800K at 1% of the maximum luminous flux – a cooler colour temperature at a high luminous intensity, and a cosy and warm colour temperature at a low luminous intensity.



MODEL VERSIONS

TRITEC MEETS THE HIGHEST STANDARDS IN LIGHTING DESIGN WHILE ENSURING A MINIMALIST CEILING LOOK



TRITEC ETA

The TriTec ETA is designed to offer the best anti-glare effect at a minimal installation depth. Using a customised heat sink means an installation depth of just 100mm can be achieved.



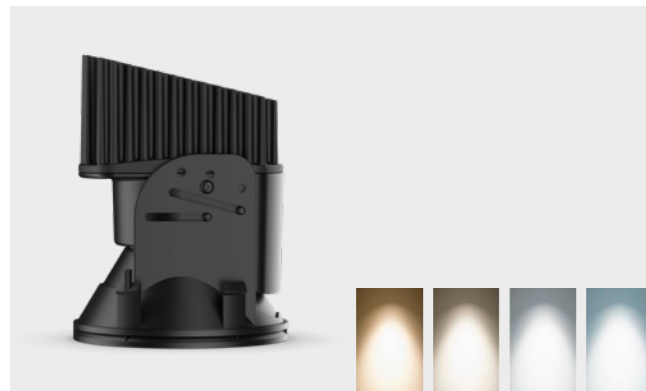
TRITEC FORTIS

With a net luminous flux of up to 1412lm (downlight 4000K, CRI \geq 95, 26°), the TriTec FORTIS offers the best possible level of lighting in high-ceilinged rooms.



TRITEC COZI

Having the right colour temperature is essential for a cosy atmosphere in any room. The TriTec COZI mimics the dimming behaviour of a halogen light bulb and offers a fluid transition from 2700K at full lighting power to 1800K at 1% of the maximum luminous flux. The high colour rendering of CRI \geq 95 is maintained throughout the entire dimming range.



TRITEC tunable white

With TriTec tunable white, the colour temperature can be adjusted fluently from warm light at 2700K to daylight-like at 6500K. This makes it possible to vary the lighting mood from stimulating to cosy regardless of the extent to which the lights are dimmed. The high colour rendering index of CRI \geq 90 is maintained throughout the colour temperature range.



VERSIONS

CONSISTENTLY VERSATILE

The TriTec luminaires are available with a ceiling trim or trimless. The square flange is only 10mm wide and 3mm high, while only 0.5mm of the reflector edge is visible in the versions trimless. The anti-dazzle cones can easily be produced in custom colours too upon request. A real material vapour deposition technique is used for the gold and copper surfaces. A coloured protective coating is applied to create the bronze and champagne finishes.

VERSATILE INSTALLATION OPTIONS

YOUR WISH IS TRITEC'S COMMAND

With its comprehensive range of installation accessories, TriTec can be tailored to suit any location. The accessories allow the system to be installed in a wide variety of ceiling constructions, including plasterboard, exposed concrete, plastered concrete, wooden and metal ceilings. There is even a solution suitable for wet rooms with a recessed ring and protective glass (IP54) that protect the luminaire from any water splashes from below.



FULLY ADAPTABLE

The height-adjustable plaster ring is the perfect solution for plastered ceilings. It enables the luminaire to be positioned at any height required to adapt to the thickness of the existing plaster, effortlessly compensating for any unevenness in the ceiling surface.

The elegant covers for TriTec provide a unique finishing touch. They allow you to use TriTec's trimless lighting solutions – downlights, spotlights and lens wallwashers – in any combination you choose. Single, double and triple covers are available, all of which can be installed in any type of hollow ceiling.

Trimless in a plasterboard ceiling



Trimless in a plastered concrete ceiling



Trimless in an exposed concrete ceiling



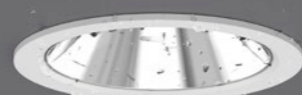
Ceiling trim in a metal ceiling



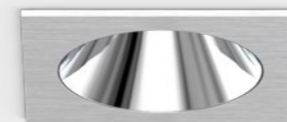
Trimless in a wooden ceiling



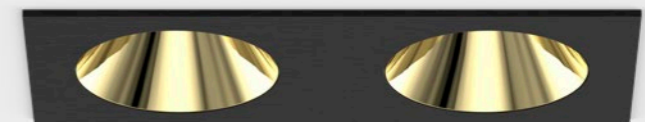
Ceiling trim in a wet room (IP54)



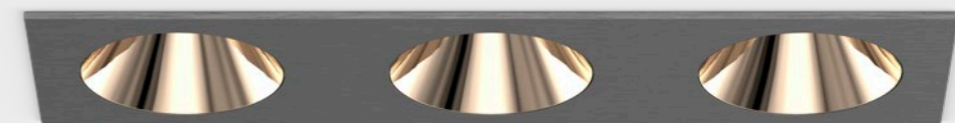
Single cover

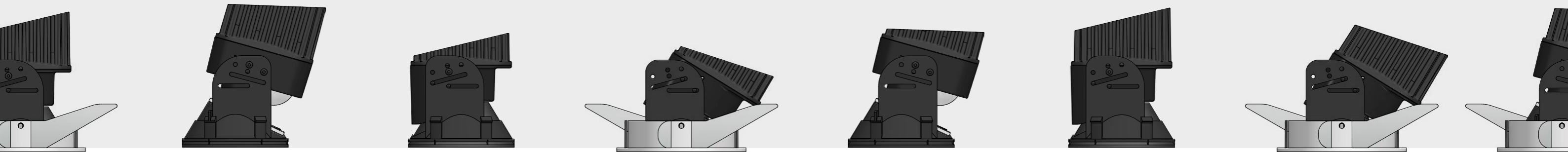


Double cover in the special colour black with anti-dazzle cones with real gold vapour deposition



Triple cover in the special colour anthracite with anti-dazzle cones with a bronze effect





MODEL OVERVIEW

Types	Variants	Properties	Activation
TriTec ETA	Downlight	Minimized installation depth	On/Off / DALI
TriTec ETA	Spotlight	Minimized installation depth	On/Off / DALI
TriTec ETA	Lens wallwasher	Minimized installation depth	On/Off / DALI
TriTec FORTIS	Downlight	Optimal output in lumen	On/Off / DALI
TriTec FORTIS	Spotlight	Optimal output in lumen	On/Off / DALI
TriTec FORTIS	Lens wallwasher	Optimal output in lumen	On/Off / DALI
TriTec COZI	Downlight	Warm dimming	DALI
TriTec COZI	Spotlight	Warm dimming	DALI
TriTec COZI	Lens wallwasher	Warm dimming	DALI
TriTec tunable white	Downlight	Tunable white	DALI DT8
TriTec tunable white	Spotlight	Tunable white	DALI DT8
TriTec tunable white	Lens wallwasher	Tunable white	DALI DT8

Colour temperature	CRI	Half-value angle	Installation type	Min. ID	Page
2700K/3000K/4000K	CRI ≥ 95	16°/26°/41°/55°	Ceiling trim/Trimless	100mm	34
2700K/3000K/4000K	CRI ≥ 95	16°/26°/41°/55°	Ceiling trim/Trimless	100mm	34
2700K/3000K/4000K	CRI ≥ 95	Lens wallwasher	Ceiling trim/Trimless	100mm	34
2700K/3000K/4000K	CRI ≥ 95	16°/26°/41°/55°	Ceiling trim/Trimless	120mm	35
2700K/3000K/4000K	CRI ≥ 95	16°/26°/41°/55°	Ceiling trim/Trimless	120mm	35
2700K/3000K/4000K	CRI ≥ 95	Lens wallwasher	Ceiling trim/Trimless	120mm	35
2700K-1800K	CRI ≥ 95	40°/47°/60°	Ceiling trim/Trimless	120mm	36
2700K-1800K	CRI ≥ 95	40°/47°/60°	Ceiling trim/Trimless	120mm	36
2700K-1800K	CRI ≥ 95	Lens wallwasher	Ceiling trim/Trimless	120mm	36
2700K-6500K	CRI ≥ 90	40°/47°/60°	Ceiling trim/Trimless	120mm	37
2700K-6500K	CRI ≥ 90	40°/47°/60°	Ceiling trim/Trimless	120mm	37
2700K-6500K	CRI ≥ 90	Lens wallwasher	Ceiling trim/Trimless	120mm	37

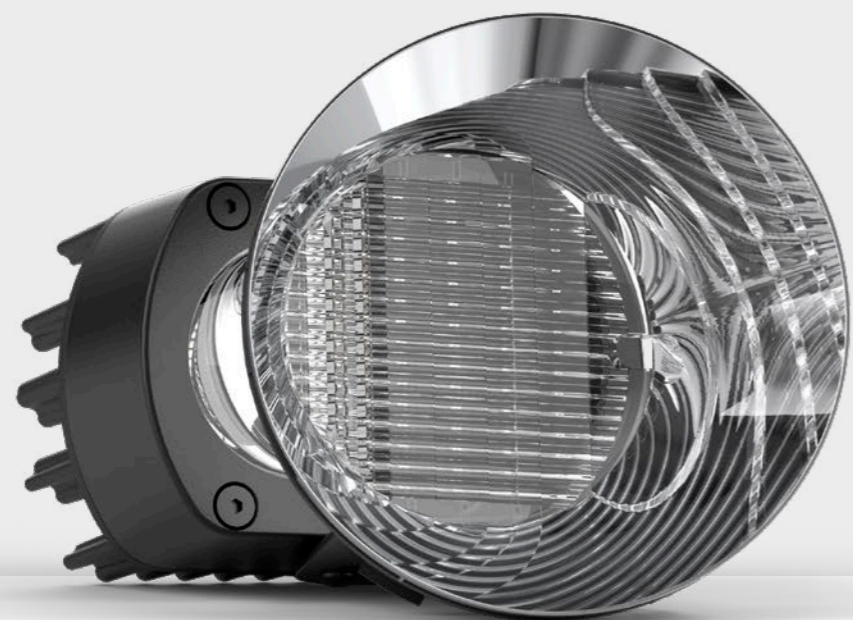


Image shows TriTec ETA lens wallwasher

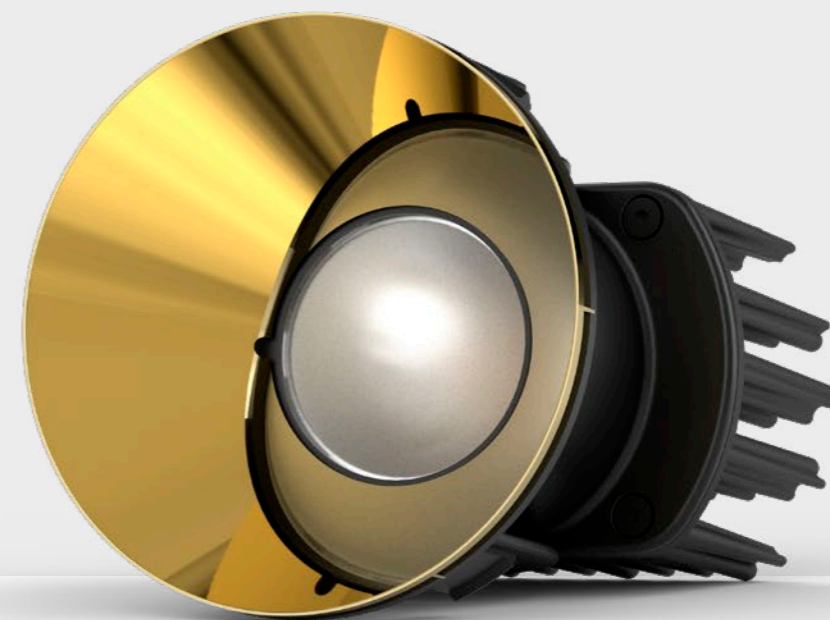


Image shows TriTec FORTIS Downlight with real gold vapour deposition

TriTec ETA

THE PERFECT SOLUTION FOR SMALL INSTALLATION SPACES

LED light engine with touch protection. High level of colour consistency (2 SDCM initial) and high colour rendering. Cooling via a die-cast aluminium heat sink, powder-coated in black textured paint. Case with primary reflector and homogenising lens. Protective cover to reduce scattered light and prevent you from seeing into the ceiling cavity. Plastic Darklight reflector trimless, with a high-gloss aluminium-plated finish, colourless scratch-resistant protective coating and 30° shielding angle. Secondary cable with adapter for pre-installing the operating device. Powered by strain-relieved terminal. Please order accessories separately.

IP20
LED
ON/OFF
DALI-2
EN 12464
Ø86

Colour temperatures	2700K, 3000K, 4000K
Colour rendering	CRI ≥ 95
Lumen maintenance	16°, 26°, 41°, 55°
Luminous flux conservation	L80/B10 90 000 h
Net luminous flux	250 to 900lm
Installation options	Concrete, timber, plaster, metal ceilings
Installation type	Ceiling trim/Trimless

A range of accessories is available for various installation situations.



Scan the QR code or click to find out more about this family of luminaires at alteme.ch.

TriTec FORTIS

HIGH LIGHT OUTPUT WITH SUPERB QUALITY OF LIGHT

LED light engine with touch protection. High level of colour consistency (2 SDCM initial) and high colour rendering. Cooling via a die-cast aluminium heat sink, powder-coated in black textured paint. Case with primary reflector and homogenising lens. Protective cover to reduce scattered light and prevent you from seeing into the ceiling cavity. Plastic Darklight reflector trimless, with a high-gloss aluminium-plated finish, colourless scratch-resistant protective coating and 30° shielding angle. Secondary cable with adapter for pre-installing the operating device. Powered by strain-relieved terminal. Please order accessories separately.

IP20
LED
ON/OFF
DALI-2
EN 12464
Ø86

Colour temperatures	2700K, 3000K, 4000K
Colour rendering	CRI ≥ 95
Lumen maintenance	16°, 26°, 41°, 55°
Luminous flux conservation	L80/B10 60 000 h
Net luminous flux	400 to 1600lm
Installation options	Concrete, timber, plaster, metal ceilings
Installation type	Ceiling trim/Trimless

A range of accessories is available for various installation situations.



Scan the QR code or click to find out more about this family of luminaires at alteme.ch.

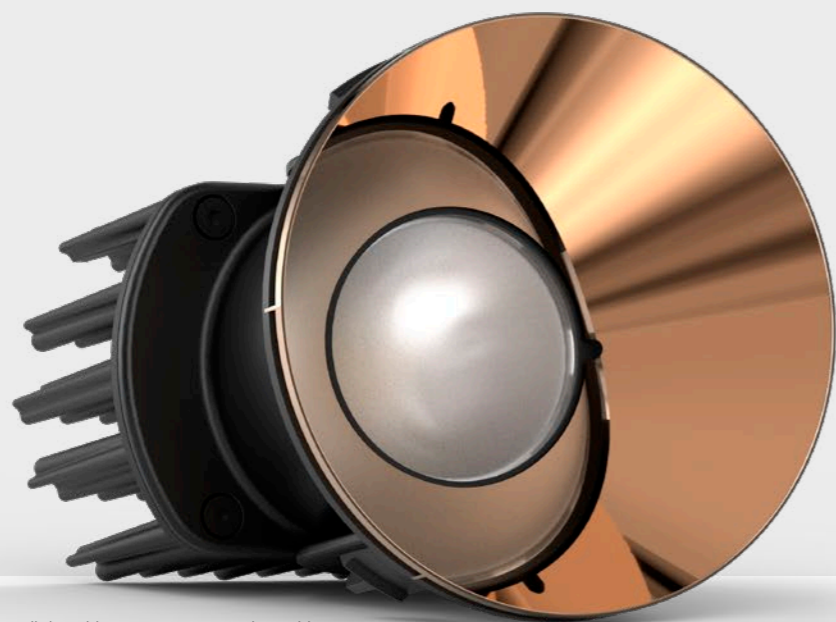


Image shows TriTec COZI downlight with copper vapour deposition



Image shows TriTec tunable white spotlight

TriTec COZI

THE PERFECT SOLUTION FOR SMALL INSTALLATION SPACES

Warm dim LED for colour temperature shift when dimming from 2700K at 100% to 1800K at 1%. High level of colour consistency (3 SDCM initial) and high colour rendering. Cooling via a die-cast aluminium heat sink, powder-coated in black textured paint. Case with primary reflector and colour-mixing lens. Protective cover to reduce scattered light and prevent you from seeing into the ceiling cavity. Plastic Darklight reflector trimless, with a high-gloss aluminium-plated finish, colourless scratch-resistant protective coating and 30° shielding angle. Secondary cable with adapter for pre-installing the operating device. Powered by strain-relieved terminal. Please order accessories separately.



Colour temperatures	2700K-1800K
Colour rendering	CRI ≥ 95
Lumen maintenance	40°, 47°, 60°
Luminous flux conservation	L80/B10 50 000 h
Net luminous flux	400 to 1100lm
Installation options	Concrete, timber, plaster, metal ceilings
Installation type	Ceiling trim/Trimless

A range of accessories is available for various installation situations.



Scan the QR code or click to find out more about this family of luminaires at alteme.ch.

TriTec tunable white

VARIABLE WHITE POINT IS ALWAYS SURE TO SET A PERFECT ATMOSPHERE

Tunable white-LED 2700K to 6500K. Outstanding color rendering throughout the dimming range. Cooling via a die-cast aluminium heat sink that is powder-coated in black textured paint. Incl. control unit DALI DT8. Case with primary reflector and colour-mixing lens. Protective cover to reduce scattered light and prevent you from seeing into the ceiling cavity. Plastic Darklight reflector without flange and a high-gloss aluminium-plated finish and 30° shielding angle. Secondary cable with adapter for pre-installing the operating device. Powered by strain-relieved terminal. Accessories must be ordered separately.



Colour temperatures	2700K-6500K
Colour rendering	CRI ≥ 90
Lumen maintenance	40°, 47°, 60°
Luminous flux conservation	L80/B10 50 000 h
Net luminous flux	400 to 1100lm
Installation options	Concrete, timber, plaster, metal ceilings
Installation type	Ceiling trim/Trimless

A range of accessories is available for various installation situations.



Scan the QR code or click to find out more about this family of luminaires at alteme.ch.

GENERAL NOTES

GENERAL INFORMATION

We reserve the right to make technical and design changes to our products owing to new technical developments. The images and descriptions reflect the products as they were when this luminaire brochure went to print. Errors are reserved. We would be happy to provide up-to-date documents on request.

All dimensions are given in millimetres.

SYMBOLS AND ACRONYMS



Only for use indoors



Protection against the ingress of solid foreign bodies measuring more than 12 mm in diameter



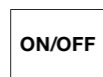
Luminaires in protective class I – with protective earth terminal



Luminaires in protective class II



LED lamps can be replaced at the factory



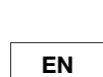
Commutable:
Turned on/off



Dimmable ballast in accordance with the DALI-2 standard



Dimmable ballast in accordance with the DALI DT8 standard



Meets the requirements for office workspaces in accordance with the relevant standard



Warmdim-LED with colour temperature shift when dimming from 2700K at 100% to 1800K at 1%



The colour temperature can be freely adjusted from 2700K to 6500K



Diameter of the anti-dazzle cone's light emission opening

TECHNICAL AND ABBREVIATIONS

CRI
Colour rendering index

FWHM
Half-value angle

lm
luminous flux (lumen)

Min. ID
Minimized installation depth

Imprint
Alteme Licht AG
Gysulastrasse 21
CH-5000 Aarau

Issue July 2021
Print run 1000 copies

 **Climate neutral**
Print product
ClimatePartner.com/13898-1911-1006

