



TriTec S

Light in its smallest form

TriTec S

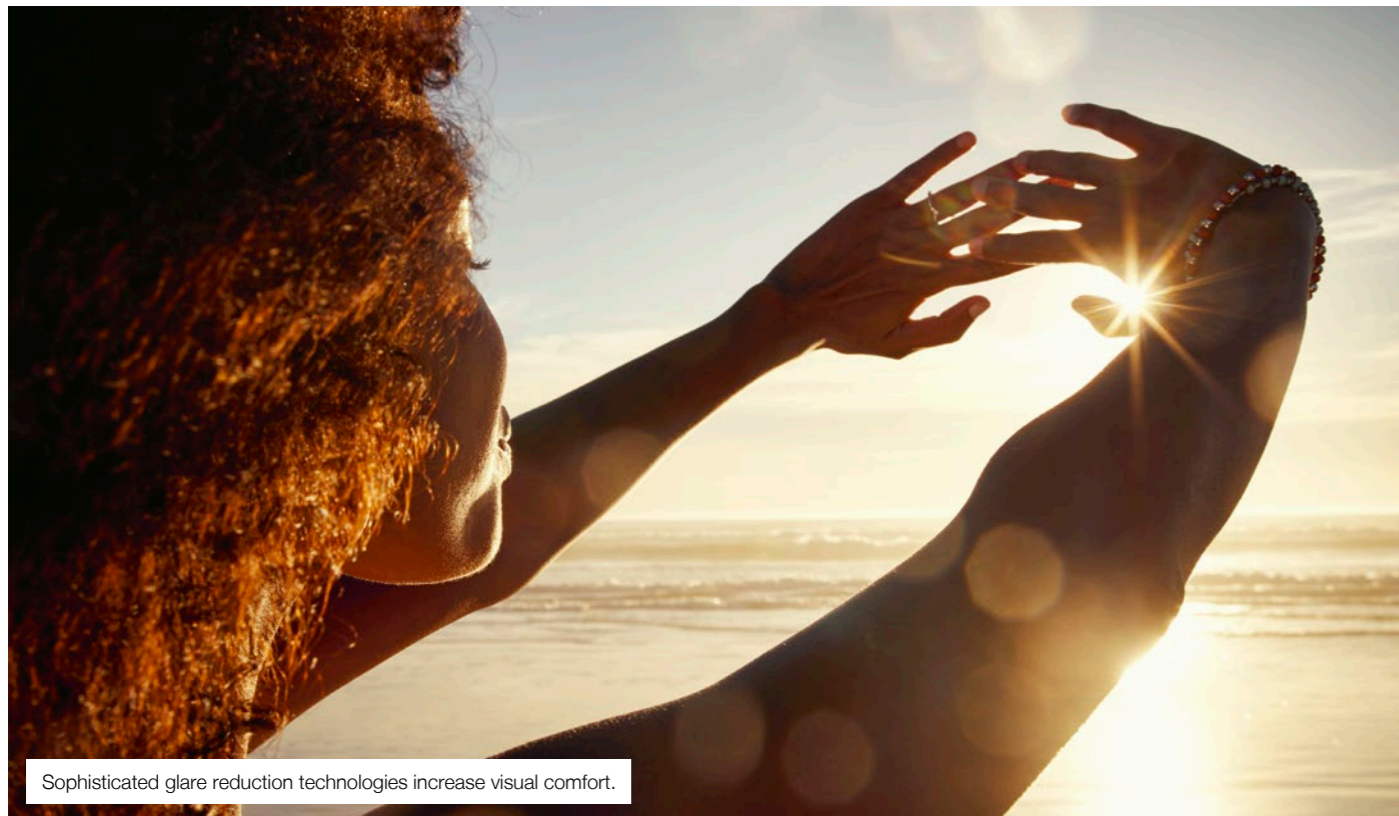
UNOBTRUSIVE FORM FOR VERSATILE LIGHT

TriTec S was developed to direct the right amount of light to the right place without comprising the architecture. The forms and colours of LEDs are shown off to their best advantage – in the highest light quality. Three technologies – downlight, directional spotlight and wallwasher – favour a perception-driven approach to light planning based on a consistent design idiom. Through the use of high-quality PMMA collimators, the light emitted is precisely directed to the correct place, where TriTec S then achieves a variety of light effects.

The reduced size of the anti-dazzle cones with darklight coating allows the light tools to practically disappear in the room, including when switched on. Thus, TriTec S really fulfils its function of bringing the room to life without attracting attention.

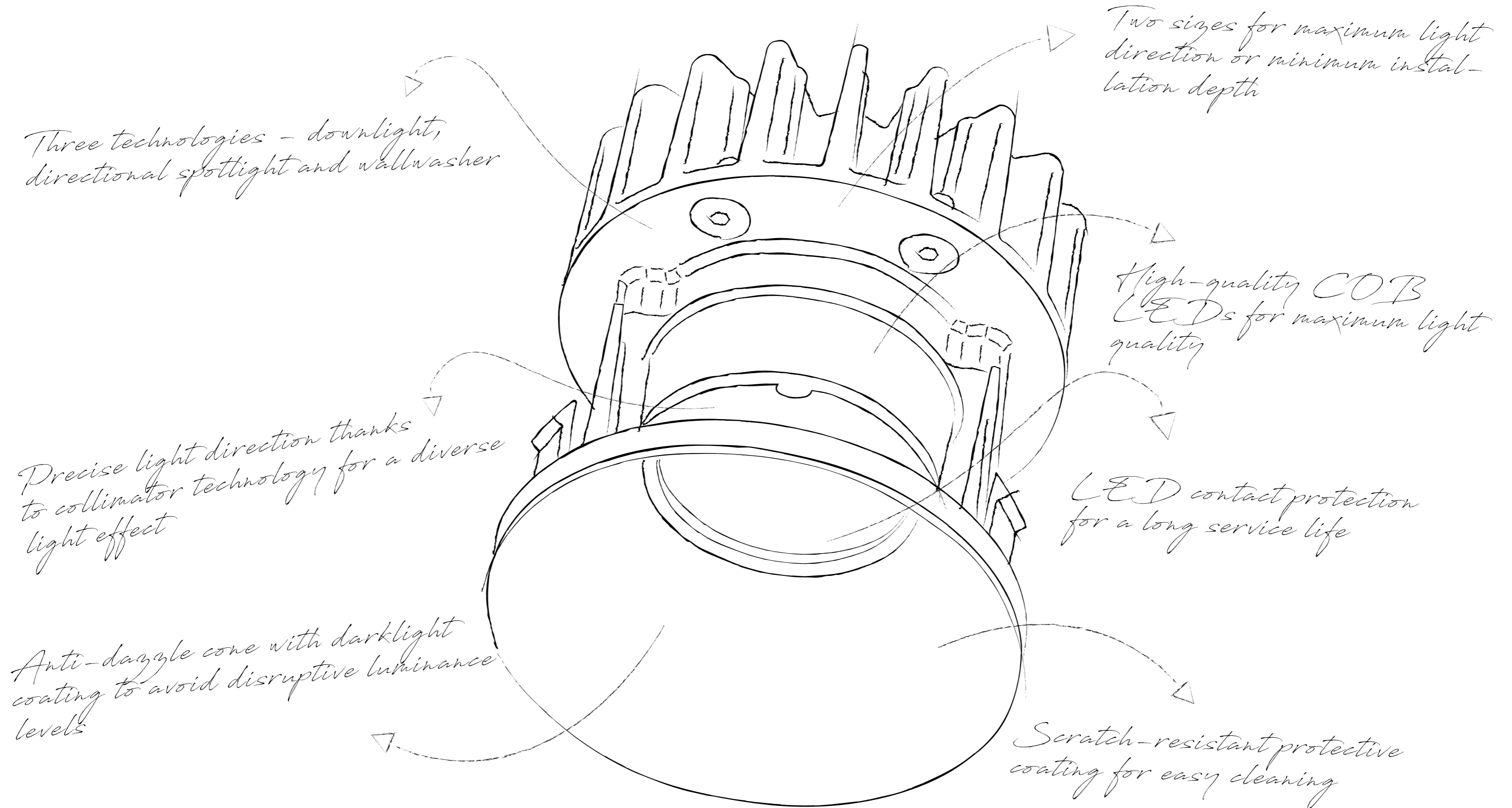
INSPIRATION

ARTIFICIAL LIGHT IS AN ARCHITECTURAL ELEMENT – OUR PRODUCTS ARE TOOLS FOR LIGHT DESIGN



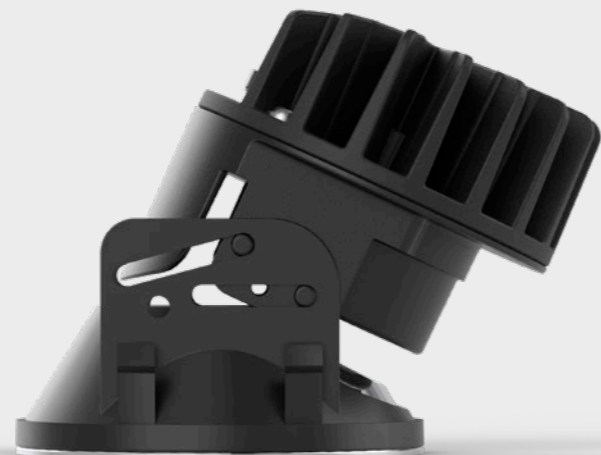
CONCEPT

WITH OUR LIGHT TOOLS WE OFFER LIGHT SOLUTIONS THAT ADD VALUE TO ARCHITECTURE



PRESENTATION

SOPHISTICATED TECHNOLOGY – HIGH-QUALITY COMPONENTS AND HIGH MANUFACTURING QUALITY MAKE TRITEC S THE PERFECT TOOL FOR SUPERIOR LIGHT APPLICATIONS



APPLICATION

ACCENTUATE BEAUTIFUL ARCHITECTURE WITH OUR LIGHTING SOLUTIONS – AN INVESTMENT THAT ALWAYS PAYS OFF



CONVERSION OF A SINGLE-FAMILY HOME

Location of project: Bern, Switzerland
Interior design: Objekt 13 Innenarchitektur, Bern
Photography: Philipp Funke, Zurich



DENTAL PRACTICE DISERENS

Location of project: Kehrsatz, Switzerland

Lighting concept: Neuco AG, Zurich

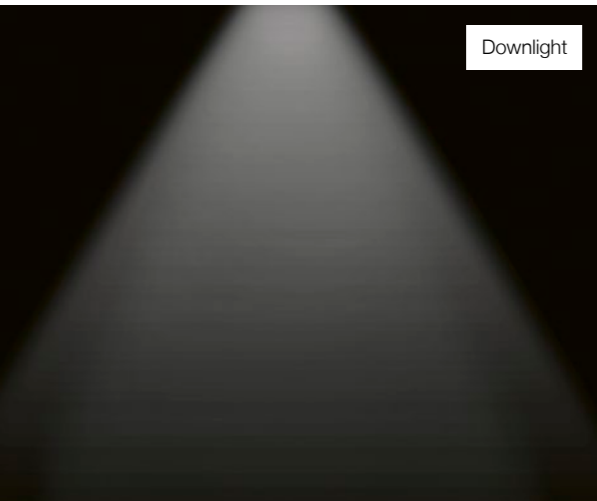
Photos: Architektur fotografie Gempeler, Bern



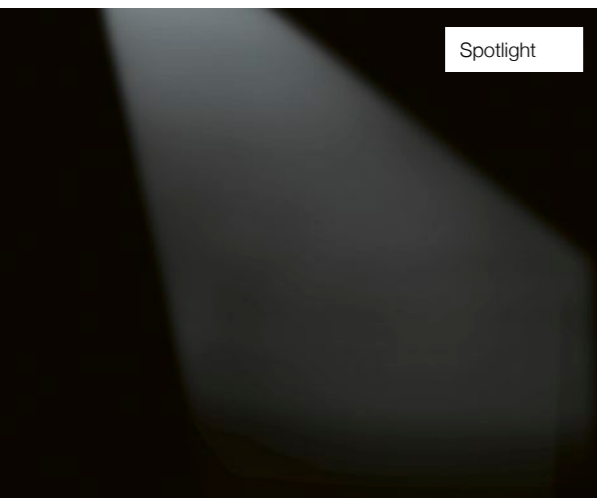
FEATURES & BENEFITS

LIGHT EFFECT

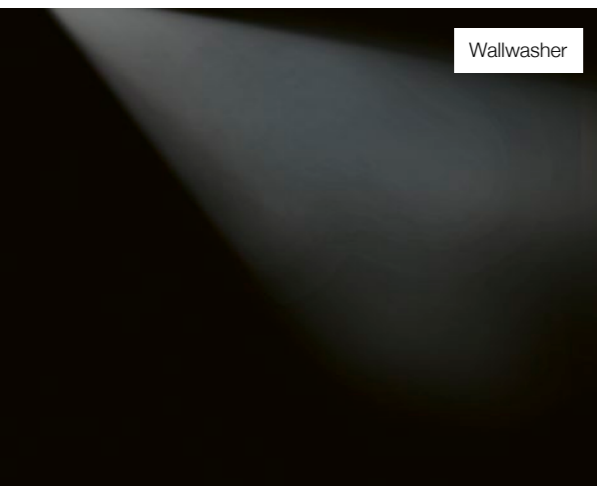
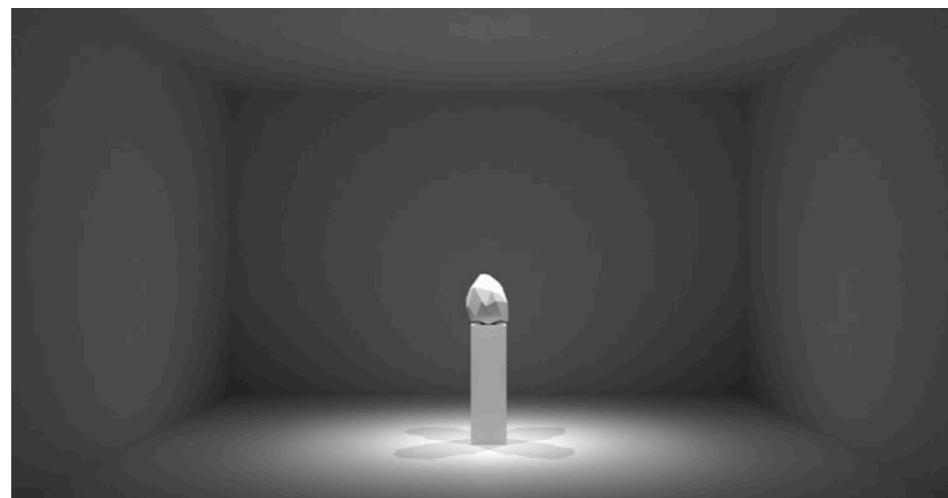
The three technologies – downlight, directional spotlight and wallwasher – favour a perception-driven approach to light concepts based on «light for seeing» and «light for looking» and in the most consistent design idiom possible.



Downlight



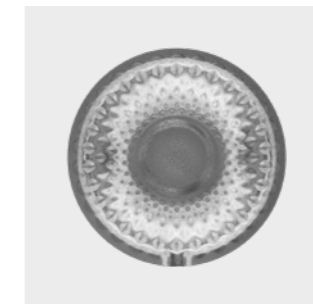
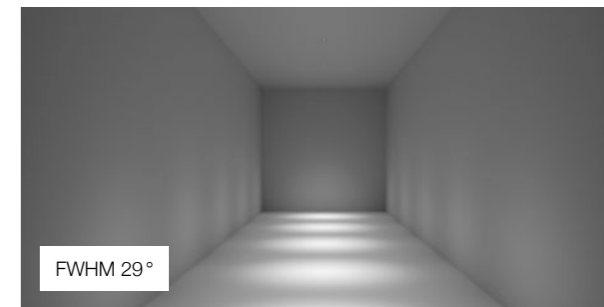
Spotlight



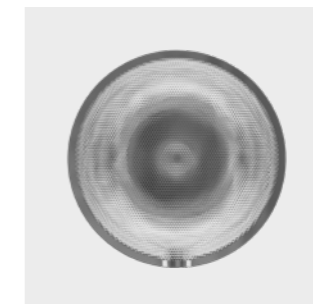
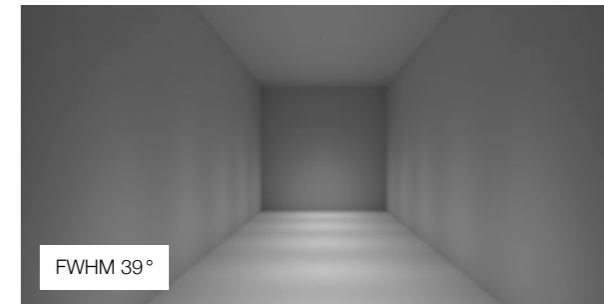
Wallwasher



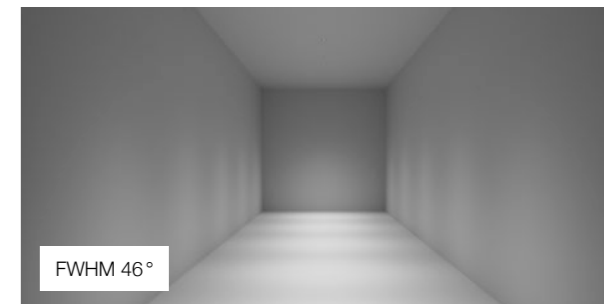
FWHM 29°



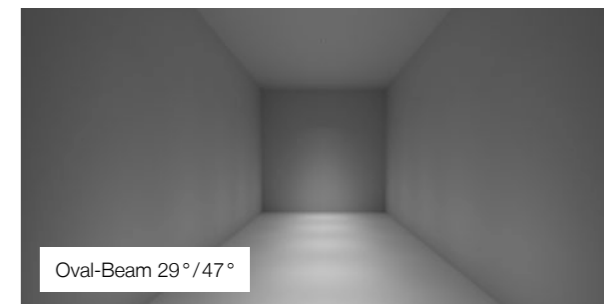
FWHM 39°



FWHM 46°

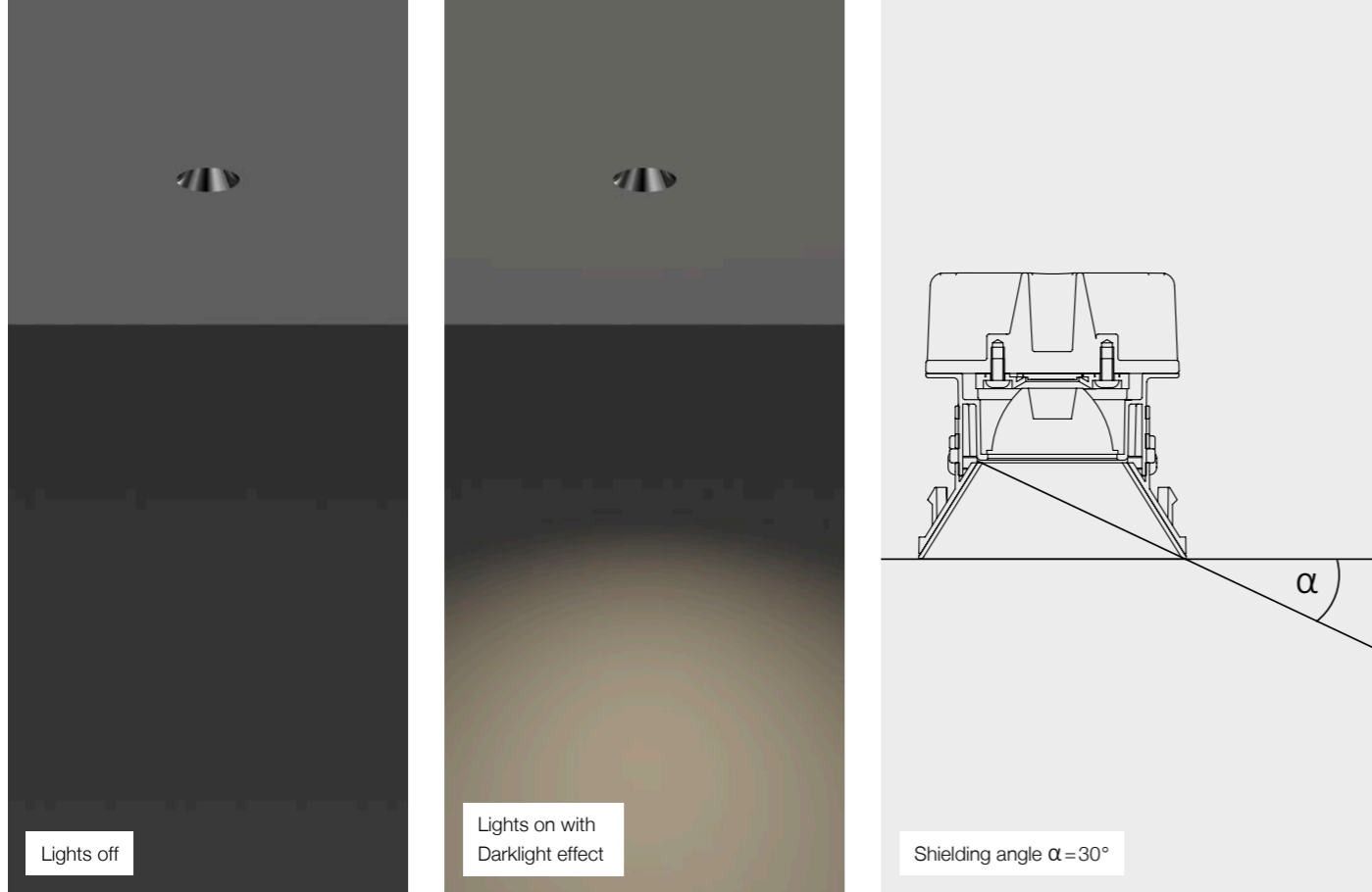


Oval-Beam 29° / 47°



High-quality PMMA collimators with prismatic embossing direct the light emitted by the LED precisely towards the desired areas in the room.

Thanks to three rotationally symmetrical light cones and an oval light cone, TriTec S achieves a variety of light effects.

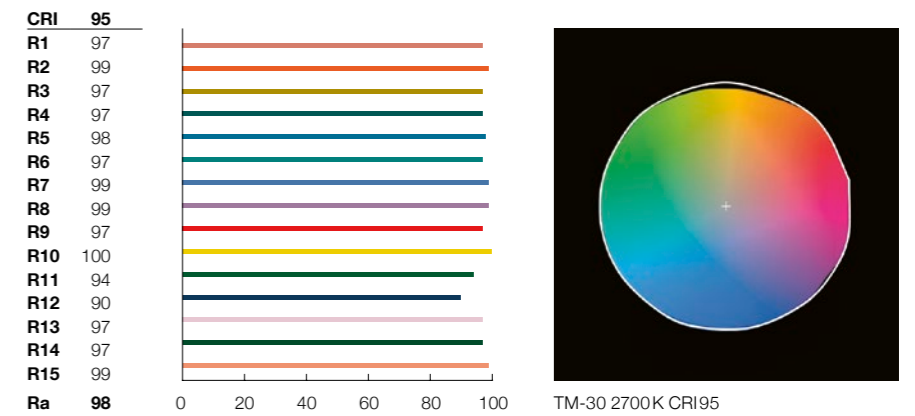


LIGHT QUALITY

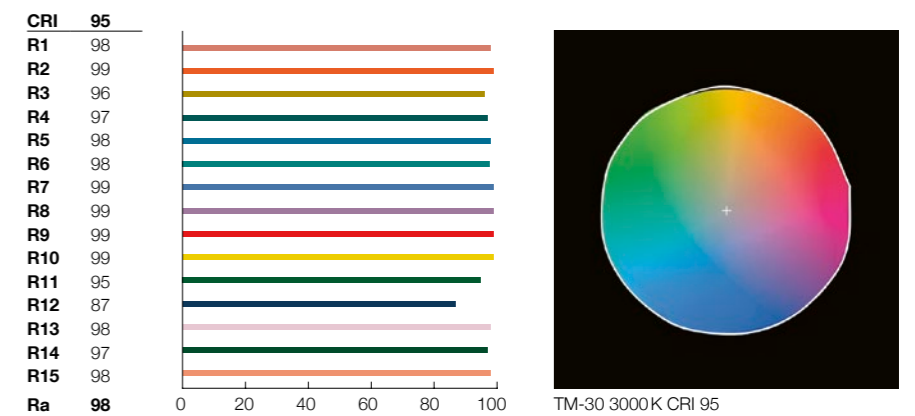
TriTec S only uses LEDs of the highest-quality. The narrow classification (referred to as «binning» in relation to LEDs) of «initial 2-step MacAdam» achieves first-class colour consistency. This means that multiple beams of light can be projected onto a white wall with no noticeable differences in colour. This guarantees that the colour of the illuminated surface is rendered consistently. The high colour rendering of up to CRI ≥ 95 gives colours a natural, full appearance.

The red tones that are difficult to produce with traditional LEDs are also rendered naturally (R9 ≥ 97 at 2700K, R9 ≥ 99 at 3000K, R9 ≥ 92 at 4000K).

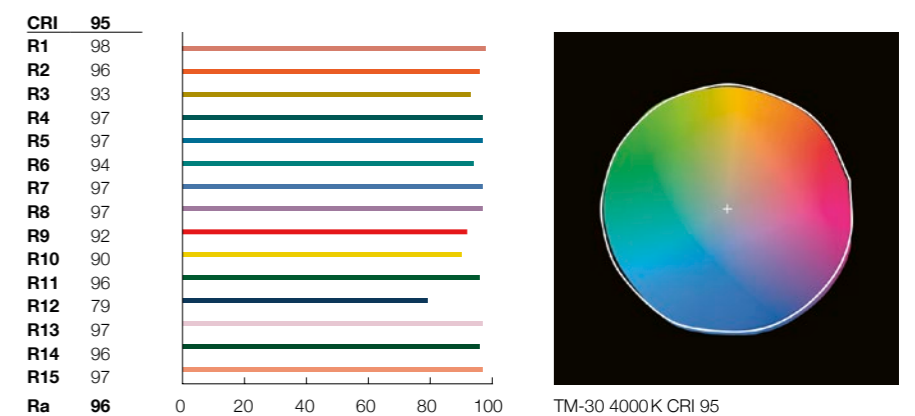
2700 K COLOUR RENDERING



3000 K COLOUR RENDERING



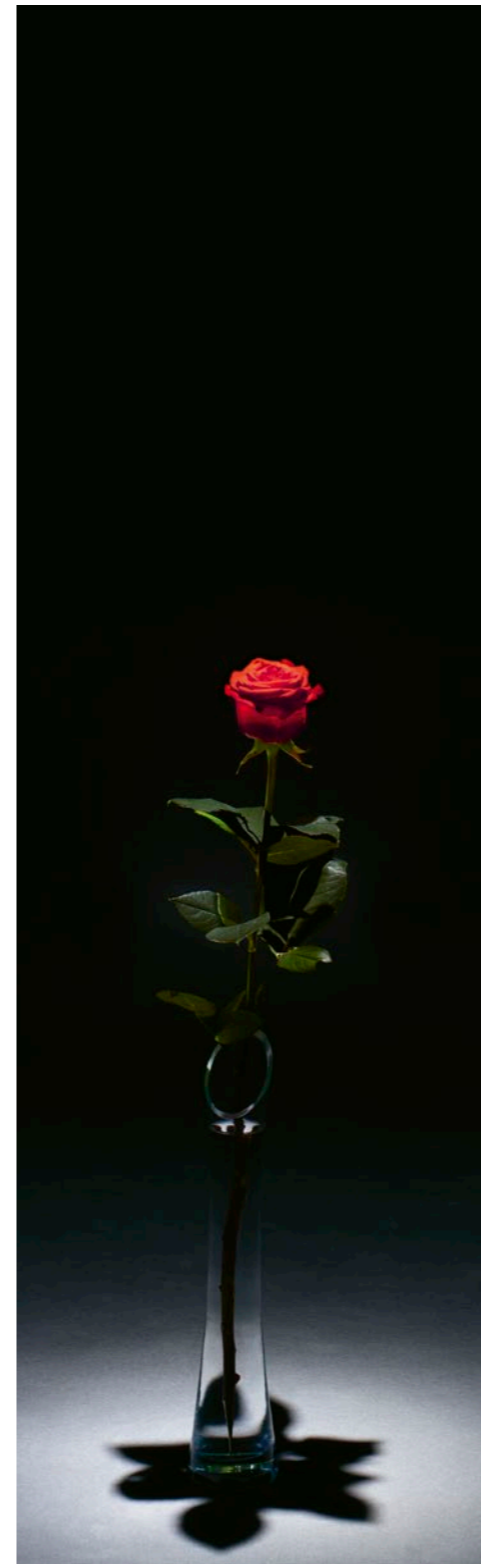
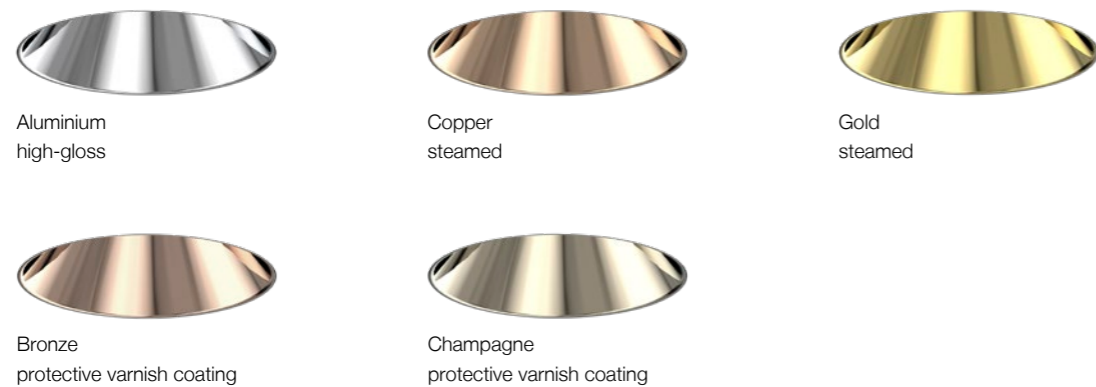
4000 K COLOUR RENDERING



GLARE-FREE LIGHT WITHOUT THE DISRUPTIVE GLOW OF THE LUMINAIRE BODY

With TriTec S, the actual light source is set back in the ceiling thanks to an anti-dazzle cone, which significantly increases the anti-dazzle area for the observer. A special coating ensures that the anti-dazzle cone does not scatter light itself and that the light only shines on the desired area in the room. This creates a 100% darklight effect.

As the anti-dazzle cone does not influence the light emitted, the customer-specific colour variations can also be achieved without affecting the light colour. The anti-dazzle cones can easily be produced in custom colours too upon request. A real material vapour deposition technique is used for the gold and copper surfaces. A coloured protective coating is applied to create the bronze and champagne finishes.



THE BEST TECHNOLOGY IN THE SMALLEST FORM

An impressive design means TriTec S offers the perfect light solution for the most stringent requirements. A specifically developed die-cast aluminium heat sink ensures optimum LED cooling while keeping the installation depth to a minimum.

GLARE-FREE LIGHT

Thanks to the anti-dazzle cone with scratch-resistant darklight coating, the actual light source is set back in the ceiling and this achieves the best possible glare-free lighting.

SIMPLE INSTALLATION

A plug connector between the luminaires and the operating devices as well as snap-on mounting without tools simplifies installation.



PRECISE LIGHT DIRECTION AND OPTIMAL LED PROTECTION

The light emitted by the COB LED is precisely directed towards the desired areas of the room by the PMMA collimators. In addition, this technology protects the LED from contact and guarantees a long service life.

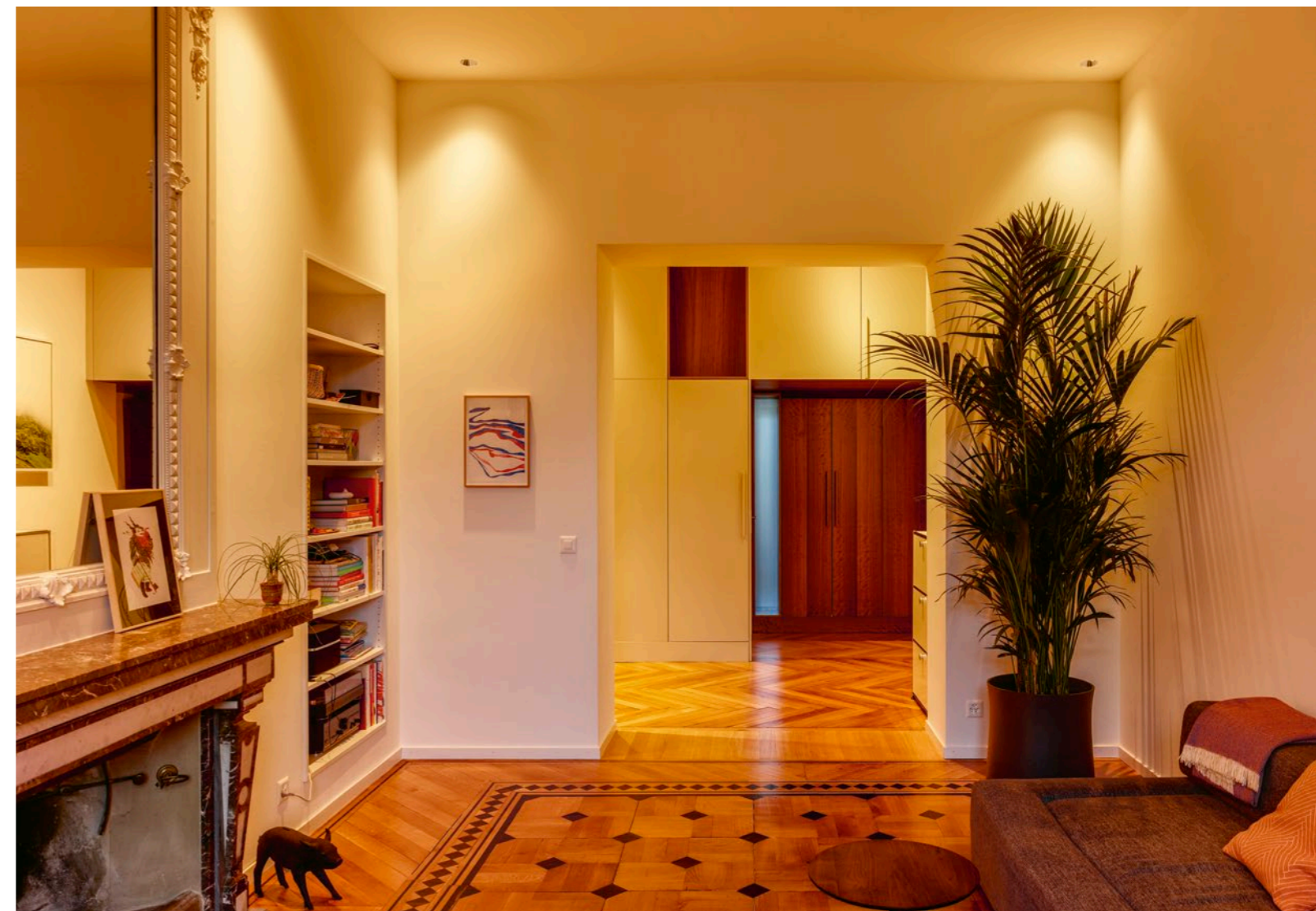
OPTIMAL POSITIONING OF THE LED THANKS TO A GUIDE MECHANISM

A guide mechanism in the directional spotlight ensures that the LED is always optimally positioned in relation to the anti-dazzle cone throughout entire pivot range of 0° to 25° and that the light cone is not cut off.

COZI – SHIFTING THE COLOUR TEMPERATURE ACROSS THE DIMMING RANGE TO CREATE A COSY ATMOSPHERE

Having the right colour temperature is essential for a cosy atmosphere in any room. TriTec S ETA and FORTIS COZI follows the example of a thermal radiator, shifting the colour temperature across the entire dimming range, from 2700K at full light output to 1800K at 1% of the maximum luminous flux – a cooler colour temperature at a high luminous intensity, and a cosy and warm colour temperature at a low luminous intensity.

With TriTec S COZI, the high colour rendering of $CRI \geq 95$ remains the same over the entire dimming range.





VERSATILE INSTALLATION OPTIONS

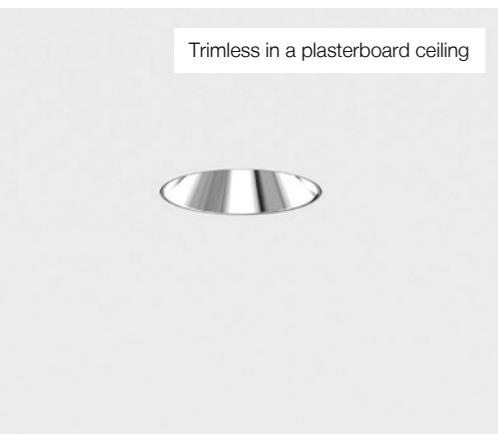
YOUR WISH IS TRITEC'S COMMAND

With its comprehensive range of installation accessories, TriTec can be tailored to suit any location. The accessories allow the system to be installed in a wide variety of ceiling constructions, including plasterboard, exposed concrete, plastered concrete, wooden and metal ceilings. There is even a solution suitable for wet rooms with a recessed ring and protective glass (IP54) that protect the luminaire from any water splashes from below.

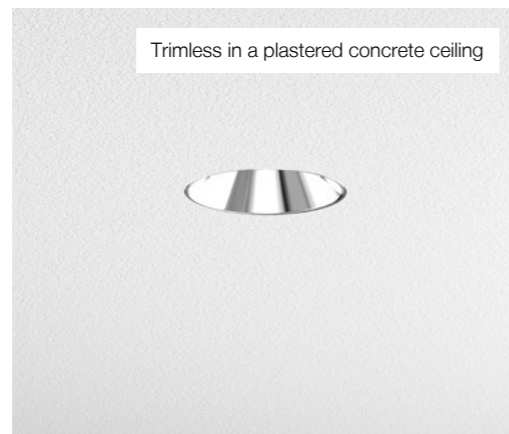
SWITCHING MADE EASY

Replacing existing halogen spotlights in 68 millimetre ceiling openings with state-of-the-art, glare-free TriTec S luminaires with flanges is a completely effortless process. Because when we were developing the TriTec S luminaire family, we specifically chose its dimensions for this very reason.

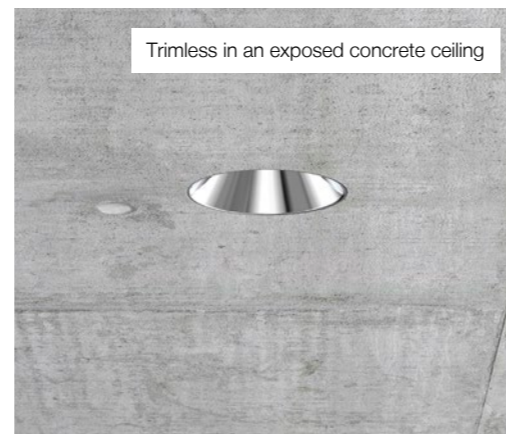
You can continue to use existing ceiling openings with no additional plasterwork required. The luminaires can be installed in the ceiling completely tool-free, and can even be used in wet rooms thanks to the mounting ring and IP54-rated protective glass. Switching light bulbs has never been so easy!



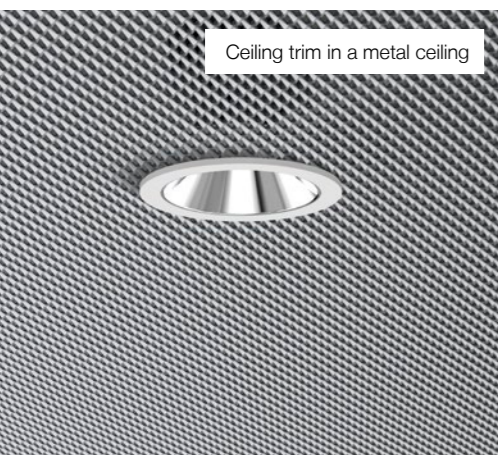
Trimless in a plasterboard ceiling



Trimless in a plastered concrete ceiling



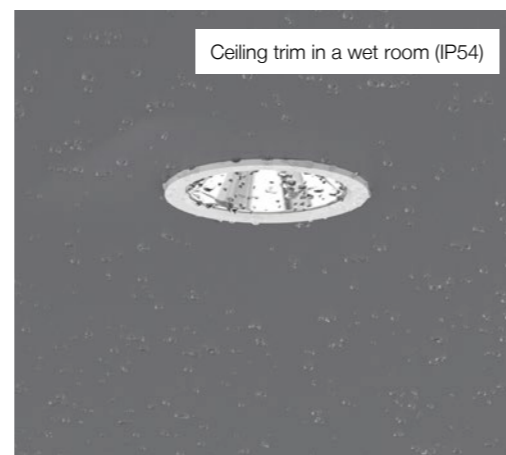
Trimless in an exposed concrete ceiling



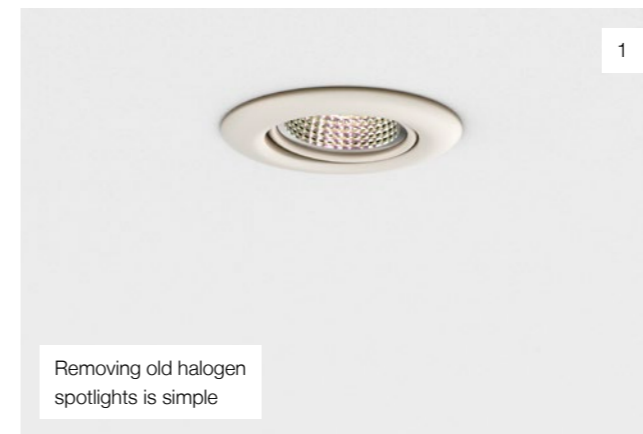
Ceiling trim in a metal ceiling



Trimless in a wooden ceiling



Ceiling trim in a wet room (IP54)



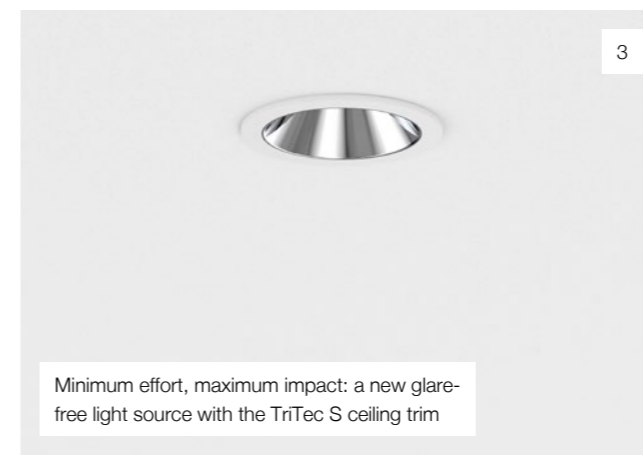
1

Removing old halogen spotlights is simple



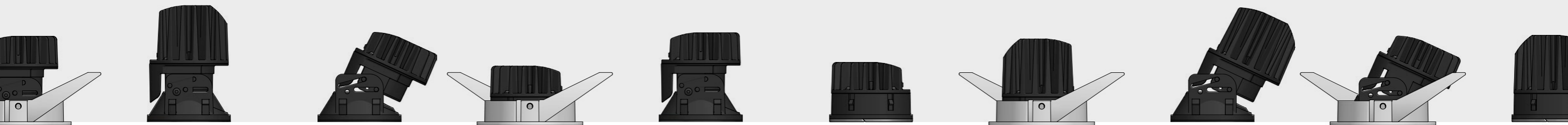
2

Existing ceiling openings can be used with no extra effort



3

Minimum effort, maximum impact: a new glare-free light source with the TriTec S ceiling trim



MODEL OVERVIEW

Types	Variants	Properties	Activation
TriTec S ETA	Downlight	Minimum installation depth	DALI
TriTec S ETA	Spotlight	Minimum installation depth	DALI
TriTec S ETA	Wallwasher	Minimum installation depth	DALI
TriTec S FORTIS	Downlight	Maximum luminous flux	DALI
TriTec S FORTIS	Spotlight	Maximum luminous flux	DALI
TriTec S FORTIS	Wallwasher	Maximum luminous flux	DALI
TriTec S COZI ETA	Downlight	Minimum installation depth, warm dimming	DALI
TriTec S COZI ETA	Spotlight	Minimum installation depth, warm dimming	DALI
TriTec S COZI ETA	Wallwasher	Minimum installation depth, warm dimming	DALI
TriTec S COZI FORTIS	Downlight	Maximum luminous flux, warm dimming	DALI
TriTec S COZI FORTIS	Spotlight	Maximum luminous flux, warm dimming	DALI
TriTec S COZI FORTIS	Wallwasher	Maximum luminous flux, warm dimming	DALI

Colour temperature	CRI	Half-value angle	Installation type	Min. ID	Page
2700K/3000K/4000K	CRI ≥ 95	29°/39°/46°/oval beam (29°/47°)	Ceiling trim/Trimless	70mm	26
2700K/3000K/4000K	CRI ≥ 95	29°/39°/46°	Ceiling trim/Trimless	70mm	26
2700K/3000K/4000K	CRI ≥ 95	Wallwasher	Ceiling trim/Trimless	70mm	26
2700K/3000K/4000K	CRI ≥ 95	29°/39°/46°/oval beam (29°/47°)	Ceiling trim/Trimless	90mm	27
2700K/3000K/4000K	CRI ≥ 95	29°/39°/46°	Ceiling trim/Trimless	90mm	27
2700K/3000K/4000K	CRI ≥ 95	Wallwasher	Ceiling trim/Trimless	90mm	27
2700K-1800K	CRI ≥ 95	31°/36°	Ceiling trim/Trimless	70mm	28
2700K-1800K	CRI ≥ 95	31°/36°	Ceiling trim/Trimless	70mm	28
2700K-1800K	CRI ≥ 95	Wallwasher	Ceiling trim/Trimless	70mm	28
2700K-1800K	CRI ≥ 95	31°/36°	Ceiling trim/Trimless	90mm	29
2700K-1800K	CRI ≥ 95	31°/36°	Ceiling trim/Trimless	90mm	29
2700K-1800K	CRI ≥ 95	Wallwasher	Ceiling trim/Trimless	90mm	29



Image shows TriTec S ETA Downlight

TriTec S ETA

THE PERFECT SOLUTION FOR SMALL INSTALLATION SPACES

Heat sink made from die-cast aluminium, powder-coated black. LED with a high level of colour consistency (2 SDCM initial) and high colour rendering. PMMA collimator: light direction and LED contact protection. Darklight anti-dazzle cone made from plastic, with a high-gloss (vaporised) aluminium finish and a colourless scratch-resistant protective coating. DALI2 operating device with plug-in connection (installed without tools), secondary circuit. Please order accessories separately.



Colour temperatures	2700K, 3000K, 4000K
Colour rendering	CRI ≥ 95
Lumen maintenance	29°, 39°, 46°, 29/47°
Luminous flux conservation	L80/B10 90 000 h
Net luminous flux	200 to 950lm
Installation options	Concrete, timber, plaster, metal ceilings
Installation type	Ceiling trim/Trimless

A range of accessories is available for various installation situations.



Scan the QR code or click to find out more about this family of luminaires at alteme.ch.

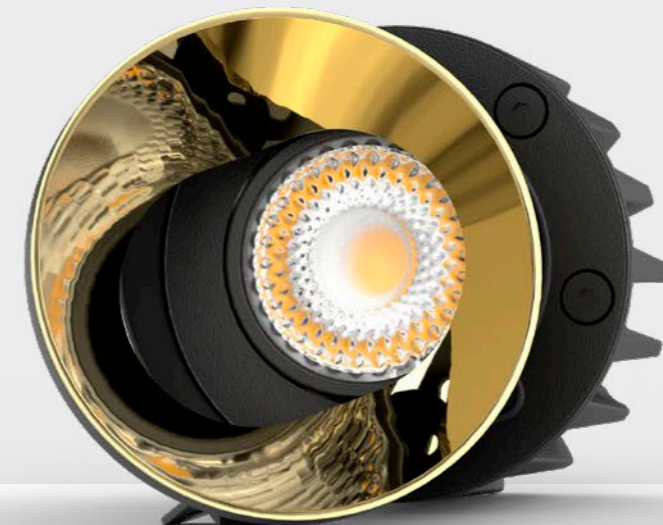


Image shows TriTec S FORTIS spotlight with real gold vapour deposition

TriTec S FORTIS

HIGH LIGHT OUTPUT WITH SUPERB QUALITY OF LIGHT

Heat sink made from die-cast aluminium, powder-coated black. LED with a high level of colour consistency (2 SDCM initial) and high colour rendering. PMMA collimator: light direction and LED contact protection. Darklight anti-dazzle cone made from plastic, with a high-gloss (vaporised) aluminium finish and a colourless scratch-resistant protective coating. DALI2 operating device with plug-in connection (installed without tools), secondary circuit. Please order accessories separately.



Colour temperatures	2700K, 3000K, 4000K
Colour rendering	CRI ≥ 95
Lumen maintenance	29°, 39°, 46°, 29/47°
Luminous flux conservation	L80/B10 60 000 h
Net luminous flux	600 to 1400lm
Installation options	Concrete, timber, plaster, metal ceilings
Installation type	Ceiling trim/Trimless

A range of accessories is available for various installation situations.



Scan the QR code or click to find out more about this family of luminaires at alteme.ch.

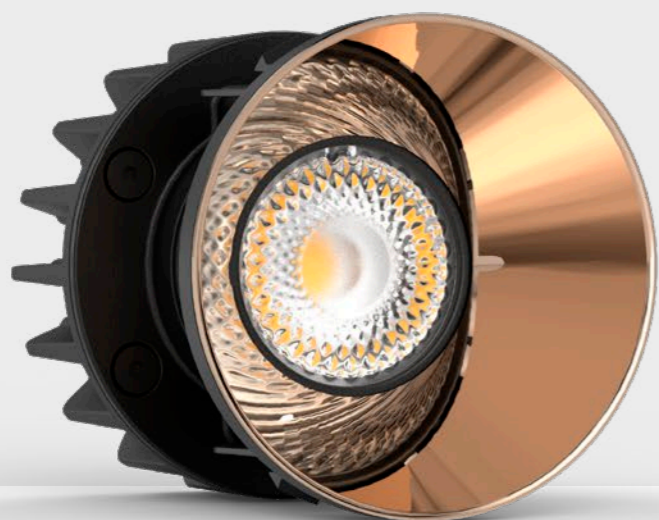


Image shows TriTec S ETA COZI downlight with copper vapour deposition

TriTec S ETA COZI

NATURAL DIMMING FOR THOSE COSY MOMENTS

Heat sink made from die-cast aluminium, powder-coated black. Warm dim LED for shifting the colour temperature by dimming from 2700K (100%) to 1800K (1%); high level of colour consistency (3 SDCM initial) and high colour rendering (CRI ≥ 95). PMMA collimator: light direction and LED contact protection. Darklight anti-dazzle cone made from plastic, with a high-gloss (vaporised) aluminium finish and a colourless scratch-resistant protective coating. DALI2 operating device with plug-in connection (installed without tools), secondary circuit. Powered by strain-relieved terminal. Please order accessories separately.



Colour temperatures	2700K-1800K
Colour rendering	CRI ≥ 95
Lumen maintenance	31°, 36°
Luminous flux conservation	L80/B10 70 000 h
Net luminous flux	250 to 400lm
Installation options	Concrete, timber, plaster, metal ceilings
Installation type	Ceiling trim/Trimless

A range of accessories is available for various installation situations.



Scan the QR code or click to find out more about this family of luminaires at alteme.ch.



Image shows TriTec S FORTIS COZI wallwasher with champagne protective coating

TriTec S FORTIS COZI

COSY AMBIENCE WITH HIGH LIGHT OUTPUT

Heat sink made from die-cast aluminium, powder-coated black. Warm dim LED for shifting the colour temperature by dimming from 2700K (100%) to 1800K (1%); high level of colour consistency (3 SDCM initial) and high colour rendering (CRI ≥ 95). PMMA collimator: light direction and LED contact protection. Darklight anti-dazzle cone made from plastic, with a high-gloss (vaporised) aluminium finish and a colourless scratch-resistant protective coating. DALI2 operating device with plug-in connection (installed without tools), secondary circuit. Please order accessories separately.



Colour temperatures	2700K-1800K
Colour rendering	CRI ≥ 95
Lumen maintenance	31°, 36°
Luminous flux conservation	L80/B10 70 000 h
Net luminous flux	550 to 800lm
Installation options	Concrete, timber, plaster, metal ceilings
Installation type	Ceiling trim/Trimless

A range of accessories is available for various installation situations.



Scan the QR code or click to find out more about this family of luminaires at alteme.ch.

GENERAL NOTES

GENERAL INFORMATION

We reserve the right to make technical and design changes to our products owing to new technical developments. The images and descriptions reflect the products as they were when this luminaire brochure went to print. Errors are reserved. We would be happy to provide up-to-date documents on request.

All dimensions are given in millimetres.

SYMBOLS AND ACRONYMS



Only for use indoors



Protection against the ingress of solid foreign bodies measuring more than 12 mm in diameter



Luminaires in protective class II



LED lamps can be replaced at the factory



Commutable:
Turned on/off



Dimmable ballast in accordance with the DALI-2 standard



Dimmable ballast in accordance with the DALI DT8 standard



Meets the requirements for office workspaces in accordance with the relevant standard



Warmdim-LED with colour temperature shift when dimming from 2700K at 100% to 1800K at 1%



Diameter of the anti-dazzle cone's light emission opening

TECHNICAL AND ABBREVIATIONS

CRI
Colour rendering index

FWHM
Half-value angle

lm
Luminous flux (lumen)

Min. ID
Minimized installation depth

Imprint
Alteme Licht AG
Gysulastrasse 21
CH-5000 Aarau

Issue July 2021
Print run 1000 copies

